

Product datasheet for **TA334232**

Kinetochore (KNTC1) Rabbit Polyclonal Antibody

Product data:

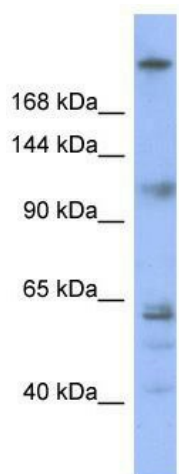
Product Type:	Primary Antibodies
Applications:	WB
Recommended Dilution:	WB
Reactivity:	Human
Host:	Rabbit
Isotype:	IgG
Clonality:	Polyclonal
Immunogen:	The immunogen for anti-KNTC1 antibody: synthetic peptide directed towards the N terminal of human KNTC1. Synthetic peptide located within the following region: MWNDIELLTNDDTGSGYLSVGSRKEHGTALYQVDLLVKISSEKASLNPKI
Formulation:	Liquid. Purified antibody supplied in 1x PBS buffer with 0.09% (w/v) sodium azide and 2% sucrose.
Purification:	Affinity Purified
Conjugation:	Unconjugated
Storage:	Store at -20°C as received.
Stability:	Stable for 12 months from date of receipt.
Predicted Protein Size:	251 kDa
Gene Name:	kinetochore associated 1
Database Link:	NP_055523 Entrez Gene 9735 Human P50748
Background:	This gene encodes a protein that is one of many involved in mechanisms to ensure proper chromosome segregation during cell division. Experimental evidence indicated that the encoded protein functioned in a similar manner to that of the Drosophila rough deal protein. [provided by RefSeq, Jul 2008]
Synonyms:	ROD
Note:	Immunogen Sequence Homology: Dog: 100%; Rat: 100%; Horse: 100%; Human: 100%; Bovine: 100%; Pig: 93%; Mouse: 93%; Guinea pig: 93%; Rabbit: 86%



[View online »](#)

Protein Families: Druggable Genome, Transcription Factors

Product images:



WB Suggested Anti-KNTC1 Antibody Titration: 0.2-1 ug/ml; ELISA Titer: 1:62500; Positive Control: OVCAR-3 cell lysate. KNTC1 is supported by BioGPS gene expression data to be expressed in OVCAR3