

Product datasheet for **TA334229**

BTF (BCLAF1) Rabbit Polyclonal Antibody

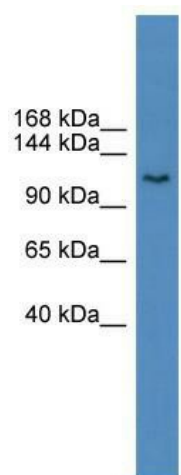
Product data:

Product Type:	Primary Antibodies
Applications:	WB
Recommended Dilution:	WB
Reactivity:	Rat
Host:	Rabbit
Isotype:	IgG
Clonality:	Polyclonal
Immunogen:	The immunogen for anti-Bclaf1 antibody: synthetic peptide corresponding to a region of Rat. Synthetic peptide located within the following region: TDGDWDDQEVLDYFSDKESAKQKFHDSEGGDTEETEDYRQFRKSVLADQG
Formulation:	Liquid. Purified antibody supplied in 1x PBS buffer with 0.09% (w/v) sodium azide and 2% sucrose. <i>Note that this product is shipped as lyophilized powder to China customers.</i>
Purification:	Affinity Purified
Conjugation:	Unconjugated
Storage:	Store at -20°C as received.
Stability:	Stable for 12 months from date of receipt.
Predicted Protein Size:	106 kDa
Gene Name:	BCL2 associated transcription factor 1
Database Link:	NP_055554 Entrez Gene 293017 Rat Q9NYF8
Background:	The function of Bclaf1 remains unknown.
Synonyms:	bK211L9.1; BTF
Note:	Immunogen Sequence Homology: Dog: 100%; Pig: 100%; Rat: 100%; Horse: 100%; Human: 100%; Bovine: 100%; Rabbit: 100%; Guinea pig: 100%; Mouse: 86%
Protein Families:	Transcription Factors



[View online »](#)

Product images:



WB Suggested Anti-Bclaf1 Antibody Titration: 0.2-1 ug/ml; ELISA Titer: 1:12500; Positive Control: Rat Kidney