

Product datasheet for **TA334226**

Smad Interacting Protein 1 (ZEB2) Rabbit Polyclonal Antibody

Product data:

| | |
|-------------------------|---|
| Product Type: | Primary Antibodies |
| Applications: | IHC, WB |
| Recommended Dilution: | WB, IHC |
| Reactivity: | Human |
| Host: | Rabbit |
| Isotype: | IgG |
| Clonality: | Polyclonal |
| Immunogen: | The immunogen for anti-ZEB2 antibody: synthetic peptide directed towards the N terminal of human ZEB2. Synthetic peptide located within the following region: SETDEEDKLHIAEDDGIANPLDQETSPASVPHHESSPHVSQALLPREEEE |
| Formulation: | Liquid. Purified antibody supplied in 1x PBS buffer with 0.09% (w/v) sodium azide and 2% sucrose. <i>Note that this product is shipped as lyophilized powder to China customers.</i> |
| Purification: | Affinity Purified |
| Conjugation: | Unconjugated |
| Storage: | Store at -20°C as received. |
| Stability: | Stable for 12 months from date of receipt. |
| Predicted Protein Size: | 136 kDa |
| Gene Name: | zinc finger E-box binding homeobox 2 |
| Database Link: | NP_055610 Entrez Gene 9839 Human O60315 |
| Background: | The protein encoded by this gene is a member of the Zfh1 family of 2-handed zinc finger/homeodomain proteins. It is located in the nucleus and functions as a DNA-binding transcriptional repressor that interacts with activated SMADs. Mutations in this gene are associated with Hirschsprung disease/Mowat-Wilson syndrome. Alternatively spliced transcript variants have been found for this gene. [provided by RefSeq, Jan 2010] |
| Synonyms: | HSPC082; SIP-1; SIP1; SMADIP1; ZFH1B |

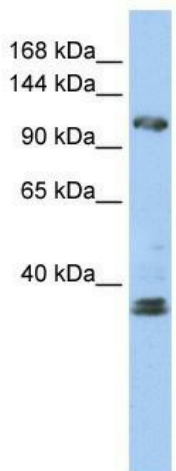


[View online »](#)

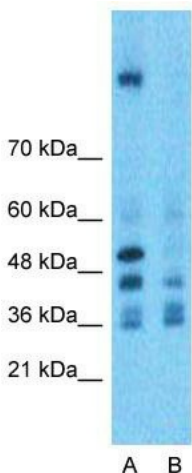
Note: Immunogen Sequence Homology: Pig: 100%; Human: 100%; Dog: 93%; Rat: 93%; Horse: 93%; Bovine: 93%; Guinea pig: 93%; Mouse: 86%; Rabbit: 86%

Protein Families: Druggable Genome, Transcription Factors

Product images:



WB Suggested Anti-ZEB2 Antibody Titration: 0.2-1 ug/ml; ELISA Titer: 1:62500; Positive Control: Jurkat cell lysate



Anti-ZEB2 Western Blot & Peptide Block Validation

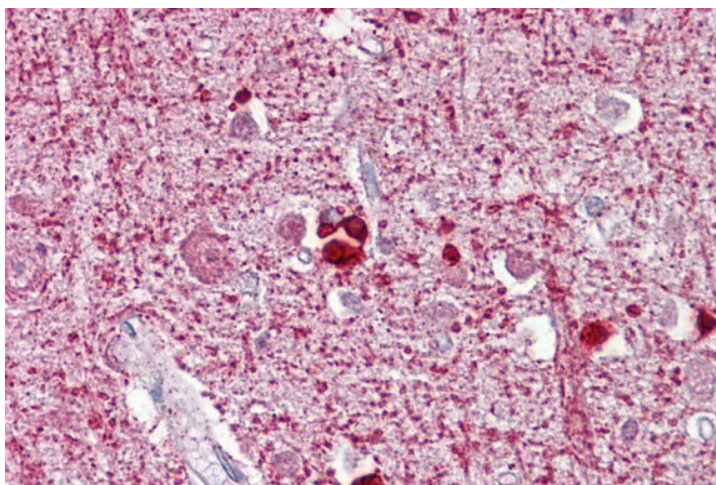
Lot Number: QC11755

Lysate: Jurkat Cell

Lane A: Primary Antibody
Lane B: Primary Antibody + Blocking Peptide

Primary Antibody Concentration: 1.0µg/ml
Peptide Concentration: 5.0µg/ml
Lysate Quantity: 25µg/lane
Gel Concentration: 12%

Host: Rabbit; Target Name: ZEB2; Sample Tissue: Jurkat Whole Cell; Lane A: Primary Antibody; Lane B: Primary Antibody + Blocking Peptide ; Primary Antibody Concentration: 1 ug/ml; Peptide Concentration: 5 ug/ml; Lysate Quantity: 25ug/lane/Lane; Gel Concentrat



Immunohistochemistry with Brain, cortex tissue at an antibody concentration of 5 ug/ml using anti-ZEB2 antibody