

## Product datasheet for **TA334224**

### ZBTB39 Rabbit Polyclonal Antibody

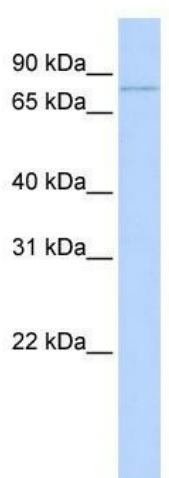
#### Product data:

Product Type:	Primary Antibodies
Applications:	WB
Recommended Dilution:	WB
Reactivity:	Human
Host:	Rabbit
Isotype:	IgG
Clonality:	Polyclonal
Immunogen:	The immunogen for anti-ZBTB39 antibody: synthetic peptide directed towards the middle region of human ZBTB39. Synthetic peptide located within the following region: CRLCSQSFKSEAAARYHVSQHKCNSGLDARPGFGLQHPALQKRKLPAEEF
Formulation:	Liquid. Purified antibody supplied in 1x PBS buffer with 0.09% (w/v) sodium azide and 2% sucrose.
Purification:	Affinity Purified
Conjugation:	Unconjugated
Storage:	Store at -20°C as received.
Stability:	Stable for 12 months from date of receipt.
Predicted Protein Size:	79 kDa
Gene Name:	zinc finger and BTB domain containing 39
Database Link:	<a href="#">NP_055645</a> <a href="#">Entrez Gene 9880 Human</a> <a href="#">O15060</a>
Background:	ZBTB39 belongs to the krueppel C2H2-type zinc-finger protein family. It contains 1 BTB (POZ) domain and 8 C2H2-type zinc fingers. ZBTB39 may be involved in transcriptional regulation.
Synonyms:	ZNF922
Note:	Immunogen Sequence Homology: Pig: 100%; Horse: 100%; Human: 100%; Rat: 93%; Bovine: 93%; Rabbit: 93%; Guinea pig: 93%
Protein Families:	Transcription Factors



[View online »](#)

## Product images:



WB Suggested Anti-ZBTB39 Antibody Titration:  
0.2-1 ug/ml; ELISA Titer: 1:312500; Positive  
Control: Hela cell lysate