

Product datasheet for TA334222

MAFB Rabbit Polyclonal Antibody

Product data:

Product Type:	Primary Antibodies
Applications:	IHC, WB
Recommended Dilution:	WB, IHC
Reactivity:	Human
Host:	Rabbit
Isotype:	IgG
Clonality:	Polyclonal
Immunogen:	The immunogen for anti-MAFB antibody: synthetic peptide directed towards the N terminal of human MAFB. Synthetic peptide located within the following region: MAAELSMGPELPTSPLAMEYVNDFDLLKFDVKKEPLGRAERPGRPCTRLQ
Formulation:	Liquid. Purified antibody supplied in 1x PBS buffer with 0.09% (w/v) sodium azide and 2% sucrose. <i>Note that this product is shipped as lyophilized powder to China customers.</i>
Purification:	Protein A purified
Conjugation:	Unconjugated
Storage:	Store at -20°C as received.
Stability:	Stable for 12 months from date of receipt.
Predicted Protein Size:	36 kDa
Gene Name:	MAF bZIP transcription factor B
Database Link:	NP_005452 Entrez Gene 9935 Human Q9Y5Q3
Background:	MAFB is a basic leucine zipper (bZIP) transcription factor that plays an important role in the regulation of lineage-specific hematopoiesis. The nuclear protein represses ETS1-mediated transcription of erythroid-specific genes in myeloid cells. The protein encoded by this gene is a basic leucine zipper (bZIP) transcription factor that plays an important role in the regulation of lineage-specific hematopoiesis. The encoded nuclear protein represses ETS1-mediated transcription of erythroid-specific genes in myeloid cells. This gene contains no introns.



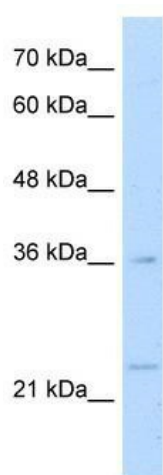
[View online »](#)

Synonyms: DURS3; KRML; MCTO

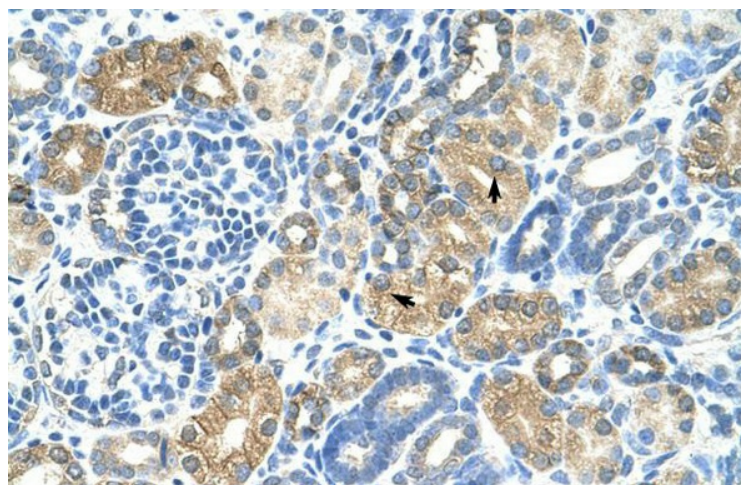
Note: Immunogen Sequence Homology: Pig: 100%; Rat: 100%; Human: 100%; Mouse: 100%; Bovine: 100%; Rabbit: 100%; Guinea pig: 100%; Zebrafish: 91%; Dog: 85%; Yeast: 82%; Horse: 77%

Protein Families: Druggable Genome, Transcription Factors

Product images:



WB Suggested Anti-MAFB Antibody Titration: 1.25 ug/ml; Positive Control: HepG2 cell lysate



Human kidney