

Product datasheet for **TA334218**

Bile Acid Receptor (NR1H4) Rabbit Polyclonal Antibody

Product data:

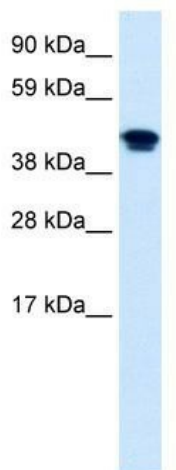
Product Type:	Primary Antibodies
Applications:	IHC, WB
Recommended Dilution:	WB, IHC
Reactivity:	Human, Mouse
Host:	Rabbit
Isotype:	IgG
Clonality:	Polyclonal
Immunogen:	The immunogen for anti-NR1H4 antibody: synthetic peptide directed towards the middle region of human NR1H4. Synthetic peptide located within the following region: AECLLTEIQCKSKRLRKNVKQHADQTVNEDSEGRDLRQVTSTTKSCREK
Formulation:	Liquid. Purified antibody supplied in 1x PBS buffer with 0.09% (w/v) sodium azide and 2% sucrose. <i>Note that this product is shipped as lyophilized powder to China customers.</i>
Purification:	Affinity Purified
Conjugation:	Unconjugated
Storage:	Store at -20°C as received.
Stability:	Stable for 12 months from date of receipt.
Predicted Protein Size:	54 kDa
Gene Name:	nuclear receptor subfamily 1 group H member 4
Database Link:	NP_005114 Entrez Gene 20186 Mouse Entrez Gene 9971 Human Q96R11
Background:	The NR1H4 gene encodes a protein that has a central role in lipid homeostasis and also regulates carbohydrate metabolism.
Synonyms:	BAR; FXR; HRR-1; HRR1; PFIC5; RIP14
Note:	Immunogen Sequence Homology: Dog: 100%; Pig: 100%; Rat: 100%; Horse: 100%; Human: 100%; Mouse: 100%; Bovine: 100%; Guinea pig: 100%; Rabbit: 93%



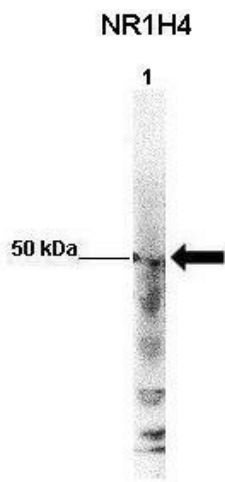
[View online »](#)

Protein Families: Druggable Genome, Nuclear Hormone Receptor, Transcription Factors

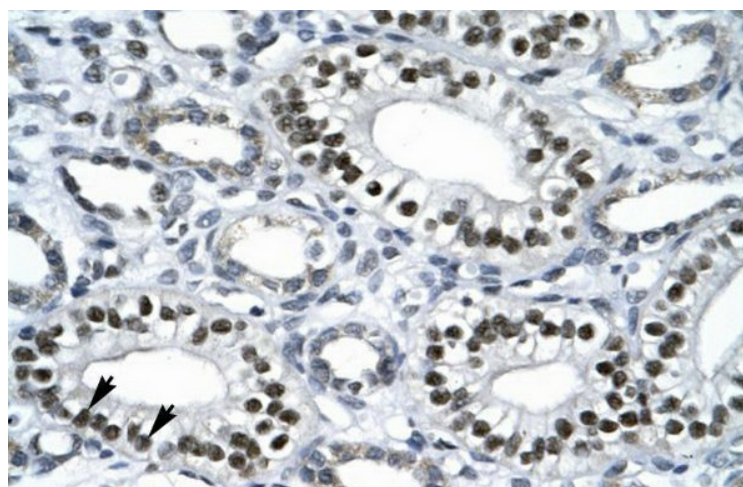
Product images:



WB Suggested Anti-NR1H4 Antibody Titration: 0.2-1 ug/ml; Positive Control: Human Lung



WB Suggested Anti-NR1H4 Antibody ; Positive Control: Lane 1: 50ug mouse glomerular endothelial lysate; Primary Antibody Dilution : 1:1000; Secondary Antibody : Anti-rabbit-HRP; Secondary Antibody Dilution : 1:5000; Submitted by: Xiaoxin Wang, UC Denver



Human kidney