

## Product datasheet for TA334217

### NR1D2 Rabbit Polyclonal Antibody

#### Product data:

|                         |  |
|-------------------------|--|
| Product Type:           | Primary Antibodies   |
| Applications:           | WB   |
| Recommended Dilution:   | WB   |
| Reactivity:             | Human  |
| Host:                   | Rabbit   |
| Isotype:                | IgG  |
| Clonality:              | Polyclonal   |
| Immunogen:              | The immunogen for anti-NR1D2 antibody: synthetic peptide directed towards the middle region of human NR1D2. Synthetic peptide located within the following region:<br>MSLFTAVVLVSADRSKIENVSVEALQETLIRALRTLIMKNHPNEASIFT  |
| Formulation:            | Liquid. Purified antibody supplied in 1x PBS buffer with 0.09% (w/v) sodium azide and 2% sucrose.<br><i>Note that this product is shipped as lyophilized powder to China customers.</i>  |
| Purification:           | Affinity Purified  |
| Conjugation:            | Unconjugated   |
| Storage:                | Store at -20°C as received.  |
| Stability:              | Stable for 12 months from date of receipt.   |
| Predicted Protein Size: | 65 kDa   |
| Gene Name:              | nuclear receptor subfamily 1 group D member 2  |
| Database Link:          | <a href="#">NP_005117</a><br><a href="#">Entrez Gene 9975 Human Q14995</a>   |
| Background:             | NR1D2 is a member of the nuclear hormone receptor family, specifically the NR1 subfamily of receptors. NR1D2 functions as a transcriptional repressor and may play a role in circadian rhythms and carbohydrate and lipid metabolism. Alternatively spliced transcript variants have been described. |
| Synonyms:               | BD73; EAR-1R; RVR  |

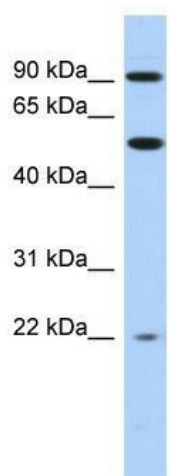


[View online »](#)

**Note:** Immunogen Sequence Homology: Dog: 100%; Pig: 100%; Rat: 100%; Horse: 100%; Human: 100%; Mouse: 100%; Bovine: 100%; Rabbit: 100%; Zebrafish: 100%; Guinea pig: 100%

**Protein Families:** Druggable Genome, Nuclear Hormone Receptor, Transcription Factors

**Product images:**



WB Suggested Anti-NR1D2 Antibody Titration:  
0.2-1 ug/ml; ELISA Titer: 1:62500; Positive Control:  
THP-1 cell lysate