

Product datasheet for **TA334213**

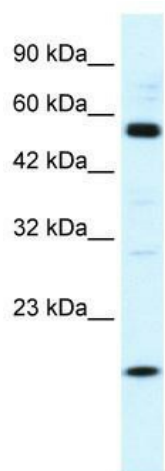
ZNF436 Rabbit Polyclonal Antibody

Product data:

Product Type:	Primary Antibodies
Applications:	WB
Recommended Dilution:	WB
Reactivity:	Human
Host:	Rabbit
Isotype:	IgG
Clonality:	Polyclonal
Immunogen:	The immunogen for anti-ZNF436 antibody: synthetic peptide directed towards the N terminal of human ZNF436. Synthetic peptide located within the following region: RQWGDLTAAEEWVSYPVTDLLVHKEVHTGIRYHICSHCGKAFSQISDL
Formulation:	Liquid. Purified antibody supplied in 1x PBS buffer with 0.09% (w/v) sodium azide and 2% sucrose. <i>Note that this product is shipped as lyophilized powder to China customers.</i>
Purification:	Protein A purified
Conjugation:	Unconjugated
Storage:	Store at -20°C as received.
Stability:	Stable for 12 months from date of receipt.
Predicted Protein Size:	54 kDa
Gene Name:	zinc finger protein 436
Database Link:	NP_085137 Entrez Gene 80818 Human Q9C0F3
Background:	ZNF436 is a candidate transcription factor
Synonyms:	Zfp46; ZNF
Note:	Immunogen Sequence Homology: Human: 100%; Dog: 92%; Pig: 92%; Rat: 92%; Horse: 92%; Mouse: 92%; Bovine: 92%; Guinea pig: 92%
Protein Families:	Transcription Factors



[View online »](#)

Product images:

WB Suggested Anti-ZNF436 Antibody Titration:
1.25 ug/ml; Positive Control: HepG2 cell lysate