

Product datasheet for TA334212

HPS2 (AP3B1) Rabbit Polyclonal Antibody

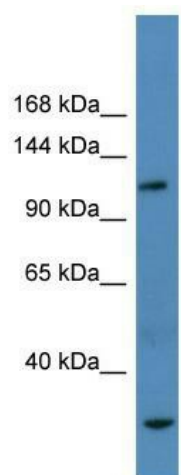
Product data:

Product Type:	Primary Antibodies
Applications:	WB
Recommended Dilution:	WB
Reactivity:	Rat
Host:	Rabbit
Isotype:	IgG
Clonality:	Polyclonal
Immunogen:	The immunogen for anti-Ap3b1 antibody: synthetic peptide corresponding to a region of Rat. Synthetic peptide located within the following region: MSSNSFAYNEQSGGGEEAELGQEATSTISSSGAFGLFSSDWKKNEDLKQM
Formulation:	Liquid. Purified antibody supplied in 1x PBS buffer with 0.09% (w/v) sodium azide and 2% sucrose. <i>Note that this product is shipped as lyophilized powder to China customers.</i>
Purification:	Affinity Purified
Conjugation:	Unconjugated
Storage:	Store at -20°C as received.
Stability:	Stable for 12 months from date of receipt.
Predicted Protein Size:	121 kDa
Gene Name:	adaptor related protein complex 3 beta 1 subunit
Database Link:	NP_003655 Entrez Gene 8546 Human O00203
Background:	The function of Ap3b1 remains unknown.
Synonyms:	ADTB3; ADTB3A; HPS; HPS2; PE
Note:	Immunogen Sequence Homology: Human: 100%; Pig: 93%; Horse: 93%; Bovine: 93%; Mouse: 92%; Dog: 79%
Protein Pathways:	Lysosome



[View online »](#)

Product images:



WB Suggested Anti-Ap3b1 Antibody Titration: 0.2-1 ug/ml; ELISA Titer: 1:62500; Positive Control: Rat Liver