

Product datasheet for **TA334210**

LHX3 Rabbit Polyclonal Antibody

Product data:

| | |
|-------------------------|--|
| Product Type: | Primary Antibodies |
| Applications: | IHC, WB |
| Recommended Dilution: | WB, IHC |
| Reactivity: | Human |
| Host: | Rabbit |
| Isotype: | IgG |
| Clonality: | Polyclonal |
| Immunogen: | The immunogen for anti-LHX3 antibody: synthetic peptide directed towards the middle region of human LHX3. Synthetic peptide located within the following region: QNRRAKEKRLKKDAGRQRWGQYFRNMKRSRGGSKSDKDSVQEGQDSDAEV |
| Formulation: | Liquid. Purified antibody supplied in 1x PBS buffer with 0.09% (w/v) sodium azide and 2% sucrose. <i>Note that this product is shipped as lyophilized powder to China customers.</i> |
| Purification: | Protein A purified |
| Conjugation: | Unconjugated |
| Storage: | Store at -20°C as received. |
| Stability: | Stable for 12 months from date of receipt. |
| Predicted Protein Size: | 44 kDa |
| Gene Name: | LIM homeobox 3 |
| Database Link: | NP_055379 Entrez Gene 8022 Human Q9UBR4 |
| Background: | LHX3 encodes a member a large protein family which carry the LIM domain, a unique cysteine-rich zinc-binding domain. The encoded protein is a transcription factor that is required for pituitary development and motor neuron specification. Mutations in this gene have been associated with a syndrome of combined pituitary hormone deficiency and rigid cervical spine. |
| Synonyms: | CPHD3; LIM3; M2-LHX3 |

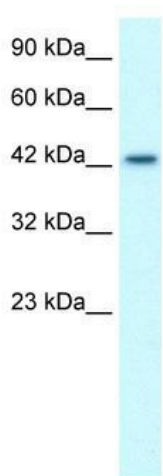


[View online »](#)

Note: Immunogen Sequence Homology: Rat: 100%; Human: 100%; Dog: 93%; Pig: 93%; Mouse: 93%; Bovine: 93%; Guinea pig: 93%; Horse: 87%; Zebrafish: 80%

Protein Families: Druggable Genome

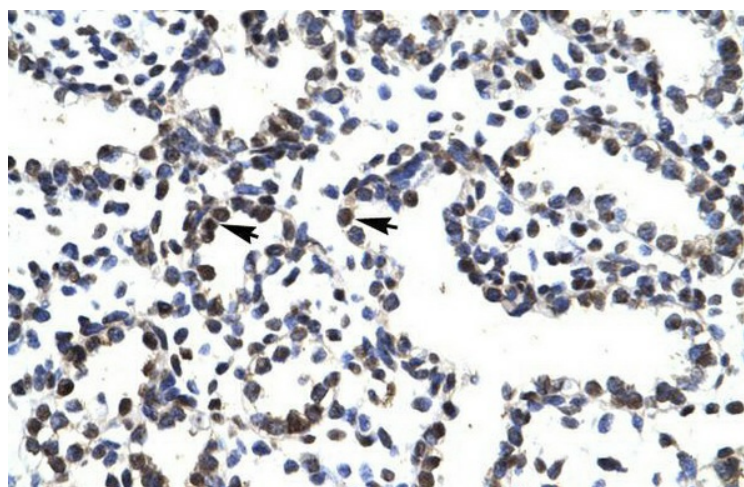
Product images:



WB Suggested Anti-LHX3 Antibody Titration: 1.25 ug/ml; Positive Control: Jurkat cell lysate



Human Heart



Human Lung