

Product datasheet for **TA334208**

Claudin 15 (CLDN15) Rabbit Polyclonal Antibody

Product data:

Product Type:	Primary Antibodies
Applications:	WB
Recommended Dilution:	WB
Reactivity:	Human
Host:	Rabbit
Isotype:	IgG
Clonality:	Polyclonal
Immunogen:	The immunogen for anti-CLDN15 antibody: synthetic peptide directed towards the middle region of human CLDN15. Synthetic peptide located within the following region: LSGYIQACRALMITAILLGFLGLLGIAGLRCTNIGGLELSRKAKLAATA
Formulation:	Liquid. Purified antibody supplied in 1x PBS buffer with 0.09% (w/v) sodium azide and 2% sucrose. <i>Note that this product is shipped as lyophilized powder to China customers.</i>
Purification:	Affinity Purified
Conjugation:	Unconjugated
Storage:	Store at -20°C as received.
Stability:	Stable for 12 months from date of receipt.
Predicted Protein Size:	24 kDa
Gene Name:	claudin 15
Database Link:	NP_055158 Entrez Gene 24146 Human P56746
Background:	CLDN15 plays a major role in tight junction-specific obliteration of the intercellular space, through calcium-independent cell-adhesion activity.
Synonyms:	FLJ42715; MGC19536
Note:	Immunogen Sequence Homology: Human: 100%; Pig: 93%; Bovine: 93%; Dog: 92%; Horse: 86%

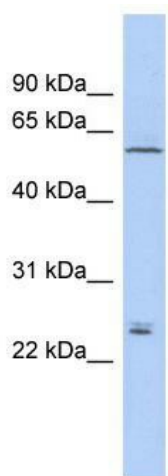


[View online »](#)

Protein Families: Transmembrane

Protein Pathways: Cell adhesion molecules (CAMs), Leukocyte transendothelial migration, Tight junction

Product images:



WB Suggested Anti-CLDN15 Antibody Titration:
0.2-1 ug/ml; ELISA Titer: 1:62500; Positive Control:
THP-1 cell lysate