

## Product datasheet for **TA334207**

### Claudin 15 (CLDN15) Rabbit Polyclonal Antibody

#### Product data:

Product Type:	Primary Antibodies
Applications:	WB
Recommended Dilution:	WB
Reactivity:	Human
Host:	Rabbit
Isotype:	IgG
Clonality:	Polyclonal
Immunogen:	The immunogen for anti-CLDN15 antibody: synthetic peptide directed towards the C terminal of human CLDN15. Synthetic peptide located within the following region: LCSACCCGSDDEDPAASARRPYQAPVSVMPVATSDQEGDSSFGKYGRNAYV
Formulation:	Liquid. Purified antibody supplied in 1x PBS buffer with 0.09% (w/v) sodium azide and 2% sucrose. <i>Note that this product is shipped as lyophilized powder to China customers.</i>
Purification:	Protein A purified
Conjugation:	Unconjugated
Storage:	Store at -20°C as received.
Stability:	Stable for 12 months from date of receipt.
Predicted Protein Size:	24 kDa
Gene Name:	claudin 15
Database Link:	<a href="#">NP_055158</a> <a href="#">Entrez Gene 24146 Human</a> <a href="#">P56746</a>
Background:	Tight junctions represent one mode of cell-to-cell adhesion in epithelial or endothelial cell sheets, forming continuous seals around cells and serving as a physical barrier to prevent solutes and water from passing freely through the paracellular space. These junctions are comprised of sets of continuous networking strands in the outwardly facing cytoplasmic leaflet, with complementary grooves in the inwardly facing extracytoplasmic leaflet.
Synonyms:	FLJ42715; MGC19536



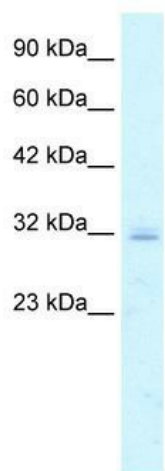
[View online »](#)

**Note:** Immunogen Sequence Homology: Human: 100%; Bovine: 77%

**Protein Families:** Transmembrane

**Protein Pathways:** Cell adhesion molecules (CAMs), Leukocyte transendothelial migration, Tight junction

**Product images:**



WB Suggested Anti-CLDN15 Antibody Titration:  
5.0 ug/ml; Positive Control: Jurkat cell lysate