

Product datasheet for **TA334206**

Claudin 23 (CLDN23) Rabbit Polyclonal Antibody

Product data:

Product Type:	Primary Antibodies
Applications:	IHC, WB
Recommended Dilution:	WB, IHC
Reactivity:	Human
Host:	Rabbit
Isotype:	IgG
Clonality:	Polyclonal
Immunogen:	The immunogen for anti-CLDN23 antibody: synthetic peptide directed towards the C terminal of human CLDN23. Synthetic peptide located within the following region: IKYYS DGQHRPPPAQHRKPKPKVGFPMRPRPKAYTNSVDVLDGEGWE
Formulation:	Liquid. Purified antibody supplied in 1x PBS buffer with 0.09% (w/v) sodium azide and 2% sucrose. <i>Note that this product is shipped as lyophilized powder to China customers.</i>
Purification:	Affinity Purified
Conjugation:	Unconjugated
Storage:	Store at -20°C as received.
Stability:	Stable for 12 months from date of receipt.
Predicted Protein Size:	17 kDa
Gene Name:	claudin 23
Database Link:	NP_919260 Entrez Gene 137075 Human Q96B33
Background:	CLDN23 is a four-transmembrane protein with WWCC motif, defined by W-X(17-22)-W-X(2)-X(8-10)-C. It is a candidate tumor suppressor gene implicated in intestinal-type gastric cancer.
Synonyms:	CLDNL; hCG1646163
Note:	Immunogen Sequence Homology: Human: 100%; Pig: 91%; Mouse: 86%; Rat: 85%; Yeast: 82%
Protein Pathways:	Cell adhesion molecules (CAMs), Leukocyte transendothelial migration, Tight junction

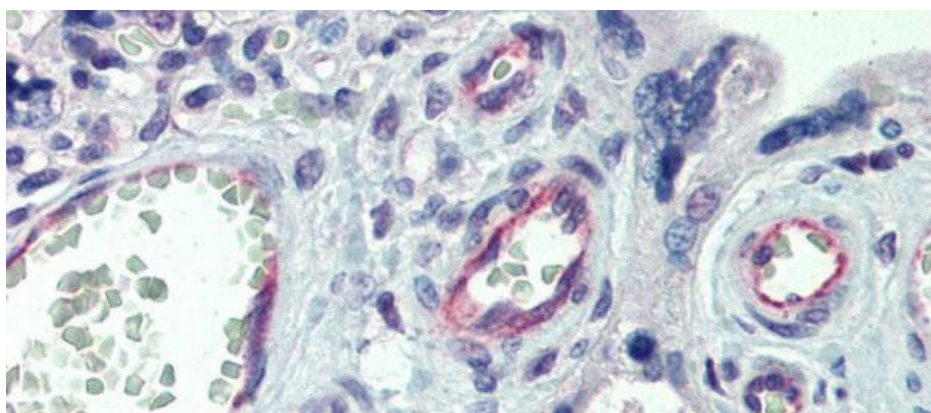


[View online »](#)

Product images:



WB Suggested Anti-CLDN23 Antibody Titration:
0.2-1 ug/ml; Positive Control: HepG2 cell lysate



Immunohistochemistry with Human Placenta
lysate tissue at an antibody concentration of 5.0
ug/ml using anti-CLDN23 antibody