

Product datasheet for **TA334203**

Oligodendrocyte Specific Protein (CLDN11) Rabbit Polyclonal Antibody

Product data:

Product Type:	Primary Antibodies
Applications:	IHC, WB
Recommended Dilution:	WB, IHC
Reactivity:	Human
Host:	Rabbit
Isotype:	IgG
Clonality:	Polyclonal
Immunogen:	The immunogen for anti-CLDN11 antibody: synthetic peptide directed towards the C terminal of human CLDN11. Synthetic peptide located within the following region: VSGYSLYAGWIGAVLCLVGGCVILCCAGDAQAFGENRFYYTAGSSSPH
Formulation:	Liquid. Purified antibody supplied in 1x PBS buffer with 0.09% (w/v) sodium azide and 2% sucrose. <i>Note that this product is shipped as lyophilized powder to China customers.</i>
Purification:	Affinity Purified
Conjugation:	Unconjugated
Storage:	Store at -20°C as received.
Stability:	Stable for 12 months from date of receipt.
Predicted Protein Size:	22 kDa
Gene Name:	claudin 11
Database Link:	NP_005593 Entrez Gene 5010 Human O75508



[View online »](#)

Background:

CLDN11 belongs to the claudin family of tight junction associated proteins and is a major component of central nervous system myelin that is necessary for normal CNS function. There is growing evidence that the protein determines the permeability between layers of myelin sheaths via focal adhesion and, with its expression highly regulated during development, may play an important role in cellular proliferation and migration. In addition, the protein is a candidate autoantigen in the development of autoimmune demyelinating disease. The protein encoded by this gene belongs to the claudin family of tight junction associated proteins and is a major component of central nervous system myelin that is necessary for normal CNS function. There is growing evidence that the protein determines the permeability between layers of myelin sheaths via focal adhesion and, with its expression highly regulated during development, may play an important role in cellular proliferation and migration. In addition, the protein is a candidate autoantigen in the development of autoimmune demyelinating disease.

Synonyms:

OSP; OTM

Note:

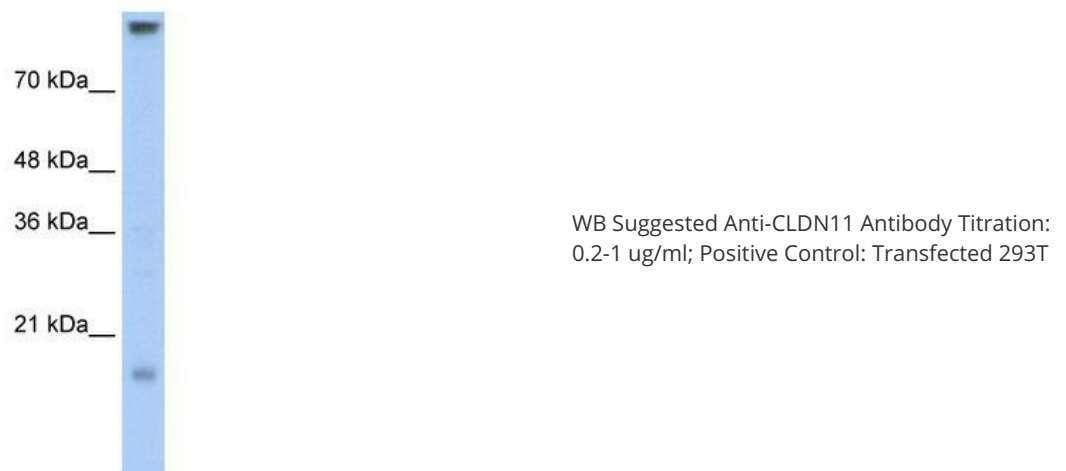
Immunogen Sequence Homology: Dog: 100%; Pig: 100%; Horse: 100%; Human: 100%; Bovine: 100%; Rabbit: 100%; Guinea pig: 100%; Rat: 86%; Mouse: 86%

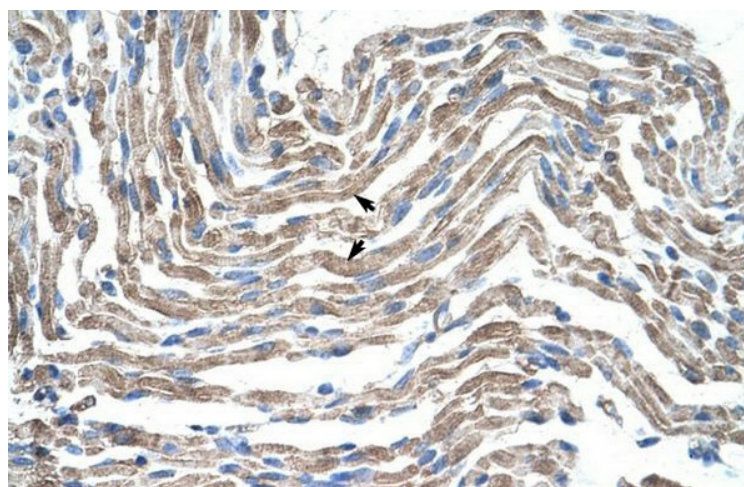
Protein Families:

Transmembrane

Protein Pathways:

Cell adhesion molecules (CAMs), Leukocyte transendothelial migration, Tight junction

Product images:



Human Muscle