

Product datasheet for **TA334201**

Claudin 4 (CLDN4) Rabbit Polyclonal Antibody

Product data:

Product Type:	Primary Antibodies
Applications:	WB
Recommended Dilution:	WB
Reactivity:	Human
Host:	Rabbit
Isotype:	IgG
Clonality:	Polyclonal
Immunogen:	The immunogen for anti-CLDN4 antibody is: synthetic peptide directed towards the C-terminal region of Human CLDN4. Synthetic peptide located within the following region: KREMGASLYVGWAASGLLLLGGGLCCNCPRTDKPYSAKYSAARSAAAS
Formulation:	Liquid. Purified antibody supplied in 1x PBS buffer with 0.09% (w/v) sodium azide and 2% sucrose. <i>Note that this product is shipped as lyophilized powder to China customers.</i>
Purification:	Affinity Purified
Conjugation:	Unconjugated
Storage:	Store at -20°C as received.
Stability:	Stable for 12 months from date of receipt.
Predicted Protein Size:	22 kDa
Gene Name:	claudin 4
Database Link:	NP_001296 Entrez Gene 1364 Human O14493
Background:	This gene encodes an integral membrane protein, which belongs to the claudin family. The protein is a component of tight junction strands and may play a role in internal organ development and function during pre- and postnatal life. This gene is deleted in Williams-Beuren syndrome, a neurodevelopmental disorder affecting multiple systems.
Synonyms:	CPE-R; CPER; CPETR; CPETR1; hCPE-R; WBSCR8



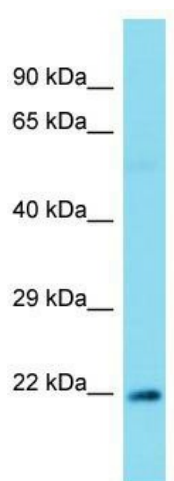
[View online »](#)

Note: Immunogen Sequence Homology: Pig: 100%; Horse: 100%; Human: 100%; Mouse: 100%; Bovine: 100%; Rabbit: 100%; Dog: 93%; Rat: 92%; Sheep: 92%; Guinea pig: 92%

Protein Families: Druggable Genome, Transmembrane

Protein Pathways: Cell adhesion molecules (CAMs), Leukocyte transendothelial migration, Tight junction

Product images:



Host: Rabbit; Target Name: CLDN4; Sample Tissue: large intestine Tumor lysates; Antibody Dilution: 1.0 ug/ml