

Product datasheet for TA334199

Claudin 8 (CLDN8) Rabbit Polyclonal Antibody

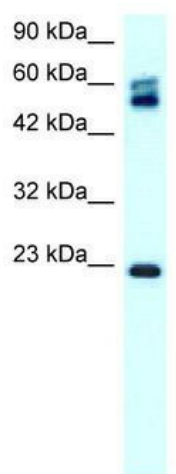
Product data:

Product Type:	Primary Antibodies
Applications:	IHC, WB
Recommended Dilution:	WB, IHC
Reactivity:	Human
Host:	Rabbit
Isotype:	IgG
Clonality:	Polyclonal
Immunogen:	The immunogen for anti-CLDN8 antibody: synthetic peptide directed towards the C terminal of human CLDN8. Synthetic peptide located within the following region: IVGGALFCCVFCCNEKSSSYRYSIPSHRTTQKSYHTGKKSPSVYSRSQYV
Formulation:	Liquid. Purified antibody supplied in 1x PBS buffer with 0.09% (w/v) sodium azide and 2% sucrose.
Purification:	Protein A purified
Conjugation:	Unconjugated
Storage:	Store at -20°C as received.
Stability:	Stable for 12 months from date of receipt.
Predicted Protein Size:	25 kDa
Gene Name:	claudin 8
Database Link:	NP_955360 Entrez Gene 9073 Human P56748
Background:	CLDN8, clustered with CLDN17 at human chromosome 21q22.11, is a four-transmembrane protein with WWCC motif, defined by W-X(17-22)-W-X(2)-C-X(8-10)-C.
Synonyms:	HEL-S-79
Note:	Immunogen Sequence Homology: Human: 100%; Horse: 85%; Bovine: 85%; Rabbit: 85%; Dog: 77%; Pig: 77%; Rat: 77%
Protein Families:	Transmembrane

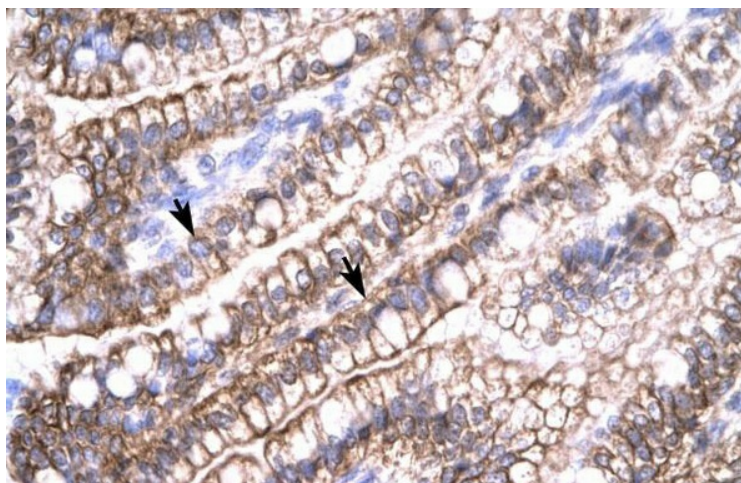

[View online »](#)

Protein Pathways: Cell adhesion molecules (CAMs), Leukocyte transendothelial migration, Tight junction

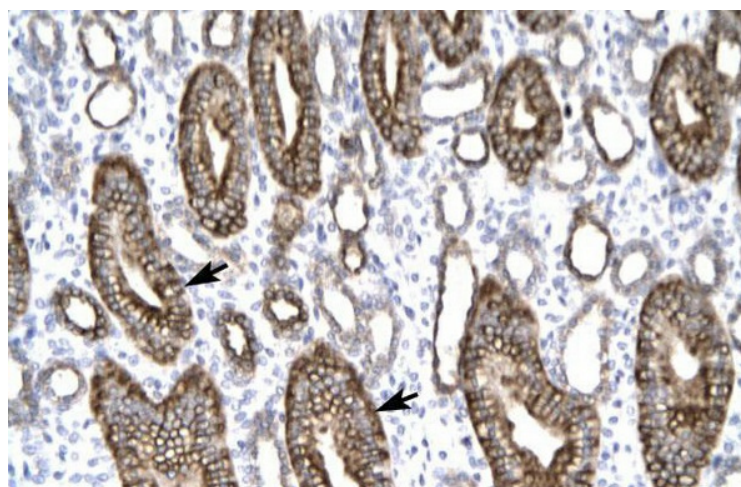
Product images:



WB Suggested Anti-CLDN8 Antibody Titration:
0.5-1.0 ug/ml; Positive Control: HepG2 cell lysate



Human Intestine



Human kidney