

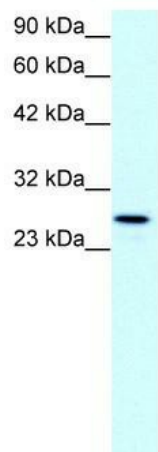
Product datasheet for TA334196

Cldn13 Rabbit Polyclonal Antibody

Product data:

Product Type:	Primary Antibodies
Applications:	WB
Recommended Dilution:	WB
Reactivity:	Mouse
Host:	Rabbit
Isotype:	IgG
Clonality:	Polyclonal
Immunogen:	The immunogen for anti-CLDN13 antibody: synthetic peptide directed towards the C terminal of mouse CLDN13. Synthetic peptide located within the following region: SSLSLAWTSSLLLLGGILLCVNIPVCRDFPRCIETPSARPSGANNDTLD
Formulation:	Liquid. Purified antibody supplied in 1x PBS buffer with 0.09% (w/v) sodium azide and 2% sucrose.
Purification:	Protein A purified
Conjugation:	Unconjugated
Storage:	Store at -20°C as received.
Stability:	Stable for 12 months from date of receipt.
Predicted Protein Size:	23 kDa
Gene Name:	claudin 13
Database Link:	NP_065250 Entrez Gene 57255 Mouse Q9Z0S4
Background:	CLDN13 is a member of claudin family. It is a four-transmembrane protein with WWCC motif, defined by W-X(17-22)-W-X(2)-C-X(8-10)-C.
Synonyms:	2500004B14Rik
Note:	Immunogen Sequence Homology: Mouse: 100%


[View online »](#)

Product images:

WB Suggested Anti-CLDN13 Antibody Titration:
1.0 ug/ml; Positive Control: Jurkat cell lysate