

Product datasheet for **TA334195**

Claudin 17 (CLDN17) Rabbit Polyclonal Antibody

Product data:

Product Type:	Primary Antibodies
Applications:	IHC, WB
Recommended Dilution:	WB, IHC
Reactivity:	Human
Host:	Rabbit
Isotype:	IgG
Clonality:	Polyclonal
Immunogen:	The immunogen for anti-CLDN17 antibody: synthetic peptide directed towards the middle region of human CLDN17. Synthetic peptide located within the following region: KQVQCTGSNERAKAYLLGTSGLVLFILTGIFVLIPVSWTANIIIRDYFNP
Formulation:	Liquid. Purified antibody supplied in 1x PBS buffer with 0.09% (w/v) sodium azide and 2% sucrose. <i>Note that this product is shipped as lyophilized powder to China customers.</i>
Purification:	Protein A purified
Conjugation:	Unconjugated
Storage:	Store at -20°C as received.
Stability:	Stable for 12 months from date of receipt.
Predicted Protein Size:	25 kDa
Gene Name:	claudin 17
Database Link:	NP_036263 Entrez Gene 26285 Human P56750
Background:	CLDN17, clustered with CLDN8 at human chromosome 21q22.11, is a four-transmembrane protein with WWCC motif, defined by W-X(17-22)-W-X(2)-C-X(8-10)-C.
Synonyms:	MGC126552; MGC126554
Note:	Immunogen Sequence Homology: Dog: 100%; Pig: 100%; Rat: 100%; Horse: 100%; Human: 100%; Mouse: 100%; Rabbit: 92%; Guinea pig: 92%; Sheep: 85%; Bovine: 85%

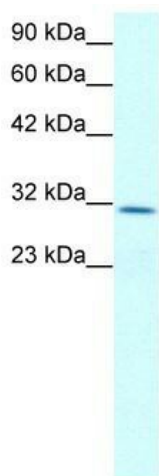


[View online »](#)

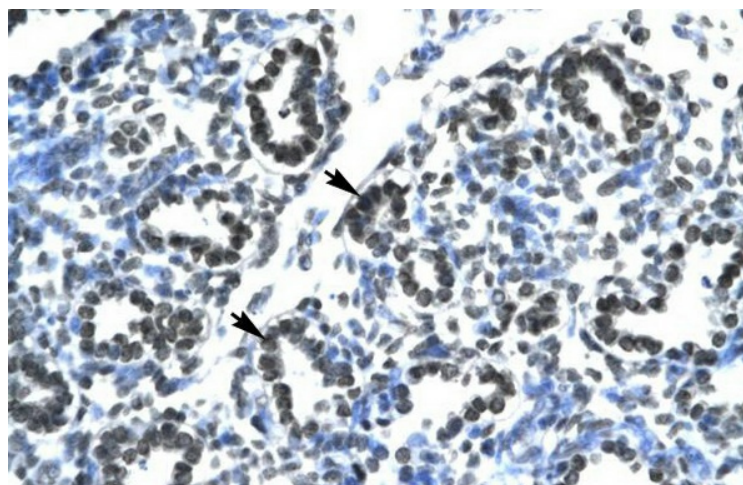
Protein Families: Transmembrane

Protein Pathways: Cell adhesion molecules (CAMs), Leukocyte transendothelial migration, Tight junction

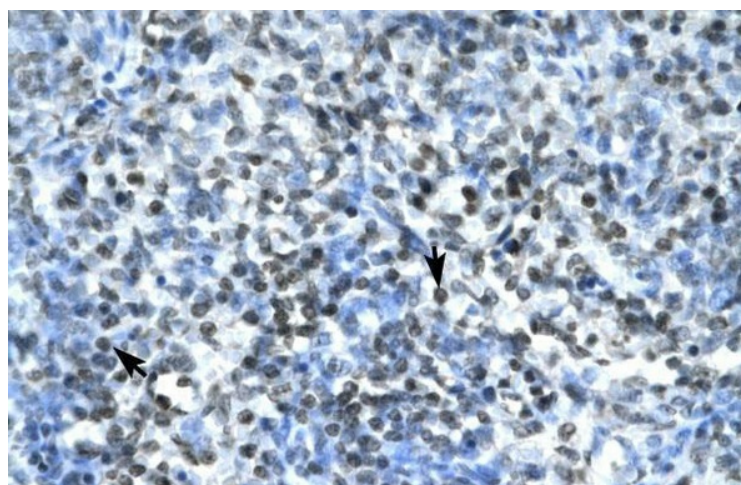
Product images:



WB Suggested Anti-CLDN17 Antibody Titration:
2.0 ug/ml; Positive Control: Jurkat cell lysate



Human Lung



Human Spleen