

Product datasheet for **TA334193**

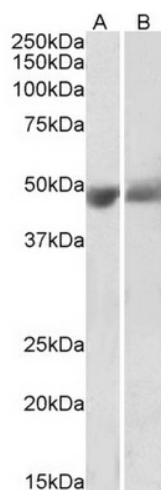
PEDF (SERPINF1) Goat Polyclonal Antibody

Product data:

Product Type:	Primary Antibodies
Applications:	WB
Recommended Dilution:	WB: 0.3-1ug/mL
Reactivity:	Human (Expected from sequence similarity: Dog, Pig, Cow)
Host:	Goat
Isotype:	IgG
Clonality:	Polyclonal
Immunogen:	Peptide with sequence C-KITGKPIKLTQVEHR, from the internal region of the protein sequence according to NP_002606.3.
Formulation:	Supplied at 0.5 mg/ml in Tris saline, 0.02% sodium azide, pH7.3 with 0.5% bovine serum albumin.
Concentration:	lot specific
Purification:	Purified from goat serum by ammonium sulphate precipitation followed by antigen affinity chromatography using the immunizing peptide.
Conjugation:	Unconjugated
Storage:	Store at -20°C as received.
Stability:	Stable for 12 months from date of receipt.
Gene Name:	serpin family F member 1
Database Link:	NP_002606 Entrez Gene 611276 Dog Entrez Gene 5176 Human P36955
Synonyms:	EPC-1; OI6; OI12; PEDF; PIG35
Protein Families:	Druggable Genome, Secreted Protein



[View online »](#)

Product images:

TA334193 (0.3ug/ml) staining of Human Albumin-depleted Plasma (A) and Serum (B) lysates (35ug protein in RIPA buffer). Primary incubation was 1 hour. Detected by chemiluminescence.