

## Product datasheet for TA334187

### Plastin L (LCP1) Goat Polyclonal Antibody

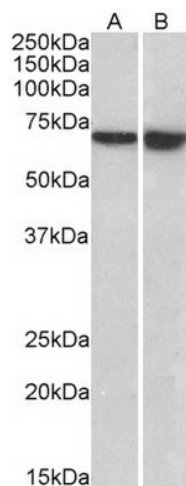
#### Product data:

|                       |   |
|-----------------------|---|
| Product Type:         | Primary Antibodies  |
| Applications:         | WB  |
| Recommended Dilution: | WB: 0.5-3ug/mL  |
| Reactivity:           | Human   |
| Host:                 | Goat  |
| Isotype:              | IgG   |
| Clonality:            | Polyclonal  |
| Immunogen:            | Peptide with sequence HLENAGCNKIGNFST, from the internal region of the protein sequence according to NP_002289.2.                     |
| Formulation:          | Supplied at 0.5 mg/ml in Tris saline, 0.02% sodium azide, pH7.3 with 0.5% bovine serum albumin.                                       |
| Concentration:        | lot specific  |
| Purification:         | Purified from goat serum by ammonium sulphate precipitation followed by antigen affinity chromatography using the immunizing peptide. |
| Conjugation:          | Unconjugated  |
| Storage:              | Store at -20°C as received.   |
| Stability:            | Stable for 12 months from date of receipt.  |
| Gene Name:            | lymphocyte cytosolic protein 1  |
| Database Link:        | <a href="#">NP_002289</a><br><a href="#">Entrez Gene 3936 Human</a><br><a href="#">P13796</a>   |
| Synonyms:             | CP64; HEL-S-37; L-PLASTIN; LC64P; LPL; PLS2   |



[View online »](#)

## Product images:



TA334187 (0.5ug/ml) staining of Daudi (A) and U927 (B) lysates (35ug protein in RIPA buffer). Primary incubation was 1 hour. Detected by chemiluminescence.