

## Product datasheet for **TA334186**

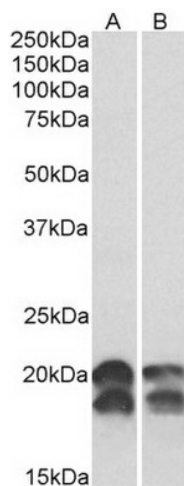
### NM23A (NME1) Goat Polyclonal Antibody

#### Product data:

Product Type:	Primary Antibodies
Applications:	WB
Recommended Dilution:	WB: 0.01-0.03ug/mL
Reactivity:	Human
Host:	Goat
Isotype:	IgG
Clonality:	Polyclonal
Immunogen:	Peptide with sequence DYTSCAQNWIYE, from the C Terminus of the protein sequence according to NP_937818.1; NP_000260.1.
Formulation:	Supplied at 0.5 mg/ml in Tris saline, 0.02% sodium azide, pH7.3 with 0.5% bovine serum albumin.
Concentration:	lot specific
Purification:	Purified from goat serum by ammonium sulphate precipitation followed by antigen affinity chromatography using the immunizing peptide.
Conjugation:	Unconjugated
Storage:	Store at -20°C as received.
Stability:	Stable for 12 months from date of receipt.
Gene Name:	NME/NM23 nucleoside diphosphate kinase 1
Database Link:	<a href="#">NP_937818</a> <a href="#">Entrez Gene 4830 Human</a> <a href="#">P15531</a>
Synonyms:	AWD; GAAD; NB; NBS; NDKA; NDPK-A; NDPKA; NM23; NM23-H1
Protein Families:	Druggable Genome, Stem cell - Pluripotency
Protein Pathways:	Metabolic pathways, Purine metabolism, Pyrimidine metabolism



[View online »](#)

**Product images:**

TA334186 (0.01ug/ml) staining of A549 (A) and HeLa (B) lysates (35ug protein in RIPA buffer). Primary incubation was 1 hour. Detected by chemiluminescence.