

## Product datasheet for **TA334185**

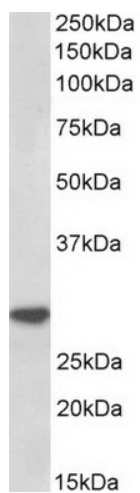
### IL1 beta (IL1B) Goat Polyclonal Antibody

#### Product data:

Product Type:	Primary Antibodies
Applications:	WB
Recommended Dilution:	WB: 1-3ug/mL
Reactivity:	Human
Host:	Goat
Isotype:	IgG
Clonality:	Polyclonal
Immunogen:	Peptide with sequence C-QLESVDPKNYPKK, from the internal region of the protein sequence according to NP_000567.1.
Formulation:	Supplied at 0.5 mg/ml in Tris saline, 0.02% sodium azide, pH7.3 with 0.5% bovine serum albumin.
Concentration:	lot specific
Purification:	Purified from goat serum by ammonium sulphate precipitation followed by antigen affinity chromatography using the immunizing peptide.
Conjugation:	Unconjugated
Storage:	Store at -20°C as received.
Stability:	Stable for 12 months from date of receipt.
Gene Name:	interleukin 1 beta
Database Link:	<a href="#">NP_000567</a> <a href="#">Entrez Gene 3553 Human</a> <a href="#">P01584</a>
Synonyms:	IL-1; IL1-BETA; IL1F2
Protein Families:	Druggable Genome, Secreted Protein
Protein Pathways:	Alzheimer's disease, Apoptosis, Cytokine-cytokine receptor interaction, Cytosolic DNA-sensing pathway, Graft-versus-host disease, Hematopoietic cell lineage, MAPK signaling pathway, NOD-like receptor signaling pathway, Prion diseases, Toll-like receptor signaling pathway, Type I diabetes mellitus



[View online »](#)

**Product images:**

TA334185 (1ug/ml) staining of Human Peripheral Blood Lymphocytes lysate (35ug protein in RIPA buffer). Primary incubation was 1 hour. Detected by chemiluminescence.