

## Product datasheet for **TA334182**

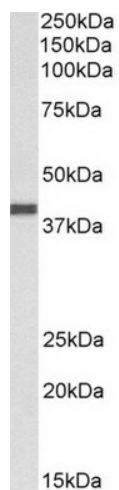
### CXCR1 Goat Polyclonal Antibody

#### Product data:

Product Type:	Primary Antibodies
Applications:	WB
Recommended Dilution:	WB: 0.3-1ug/mL
Reactivity:	Human
Host:	Goat
Isotype:	IgG
Clonality:	Polyclonal
Immunogen:	Peptide with sequence DYSPCMLETETLN, from the internal region (near N terminus) of the protein sequence according to NP_000625.1.
Formulation:	Supplied at 0.5 mg/ml in Tris saline, 0.02% sodium azide, pH7.3 with 0.5% bovine serum albumin.
Concentration:	lot specific
Purification:	Purified from goat serum by ammonium sulphate precipitation followed by antigen affinity chromatography using the immunizing peptide.
Conjugation:	Unconjugated
Storage:	Store at -20°C as received.
Stability:	Stable for 12 months from date of receipt.
Gene Name:	C-X-C motif chemokine receptor 1
Database Link:	<a href="#">NP_000625</a> <a href="#">Entrez Gene 3577 Human</a> <a href="#">P25024</a>
Synonyms:	C-C; C-C-CKR-1; CD128; CD181; CDw128a; CKR-1; CMKAR1; IL8R1; IL8RA; IL8RBA
Protein Families:	Druggable Genome, GPCR, Transmembrane
Protein Pathways:	Chemokine signaling pathway, Cytokine-cytokine receptor interaction, Endocytosis, Epithelial cell signaling in Helicobacter pylori infection



[View online »](#)

**Product images:**

TA334182 (0.3ug/ml) staining of Human Breast cancer lysate (35ug protein in RIPA buffer). Primary incubation was 1 hour. Detected by chemiluminescence.