

Product datasheet for **TA334181**

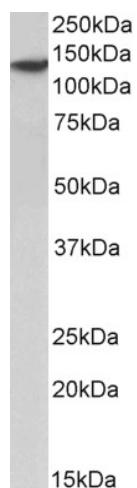
SP140 Goat Polyclonal Antibody

Product data:

Product Type:	Primary Antibodies
Applications:	WB
Recommended Dilution:	WB: 1-3ug/mL
Reactivity:	Human
Host:	Goat
Isotype:	IgG
Clonality:	Polyclonal
Immunogen:	Peptide with sequence EGQNLQEQVCPEP, from the N-Terminus of the protein sequence according to NP_009168.4; NP_001005176.1; NP_001265380.1; NP_001265381.1; NP_001265382.1.
Formulation:	Supplied at 0.5 mg/ml in Tris saline, 0.02% sodium azide, pH7.3 with 0.5% bovine serum albumin.
Concentration:	lot specific
Purification:	Purified from goat serum by ammonium sulphate precipitation followed by antigen affinity chromatography using the immunizing peptide.
Conjugation:	Unconjugated
Storage:	Store at -20°C as received.
Stability:	Stable for 12 months from date of receipt.
Gene Name:	SP140 nuclear body protein
Database Link:	NP_001005176 Entrez Gene 11262 Human Q13342
Synonyms:	LYSP100; LYSP100-A; LYSP100-B
Protein Families:	Druggable Genome, Transcription Factors



[View online »](#)

Product images:

TA334181 (2ug/ml) staining of Human Spleen lysate (35ug protein in RIPA buffer). Primary incubation was 1 hour. Detected by chemiluminescence.