

Product datasheet for **TA334180**

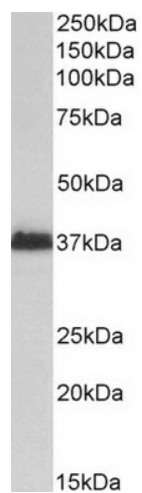
MSI2 Goat Polyclonal Antibody

Product data:

Product Type:	Primary Antibodies
Applications:	WB
Recommended Dilution:	WB: 1-3ug/mL
Reactivity:	Human (Expected from sequence similarity: Mouse, Dog)
Host:	Goat
Isotype:	IgG
Clonality:	Polyclonal
Immunogen:	Peptide with sequence QGTSGSANDSQHD-C, from the N Terminus of the protein sequence according to NP_620412.1.
Formulation:	Supplied at 0.5 mg/ml in Tris saline, 0.02% sodium azide, pH7.3 with 0.5% bovine serum albumin.
Concentration:	lot specific
Purification:	Purified from goat serum by ammonium sulphate precipitation followed by antigen affinity chromatography using the immunizing peptide.
Conjugation:	Unconjugated
Storage:	Store at -20°C as received.
Stability:	Stable for 12 months from date of receipt.
Gene Name:	musashi RNA binding protein 2
Database Link:	NP_620412 Entrez Gene 76626 Mouse Entrez Gene 475148 Dog Entrez Gene 124540 Human Q96DH6
Synonyms:	MSI2H



[View online »](#)

Product images:

TA334180 (2ug/ml) staining of Kelly lysate (35ug protein in RIPA buffer). Primary incubation was 1 hour. Detected by chemiluminescence.