

## Product datasheet for **TA334176**

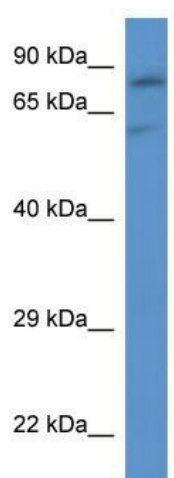
### SLC26A2 Rabbit Polyclonal Antibody

#### Product data:

Product Type:	Primary Antibodies
Applications:	WB
Recommended Dilution:	WB
Reactivity:	Mouse
Host:	Rabbit
Isotype:	IgG
Clonality:	Polyclonal
Immunogen:	The immunogen for Anti-Slc26a2 Antibody: synthetic peptide corresponding to a region of Mouse. Synthetic peptide located within the following region: VSMQLSHDPLEVHTIVIDCSAIQFLDTAGIHTLKEVRRDYEA VGIQVLLA
Formulation:	Liquid. Purified antibody supplied in 1x PBS buffer with 0.09% (w/v) sodium azide and 2% sucrose. <i>Note that this product is shipped as lyophilized powder to China customers.</i>
Purification:	Affinity Purified
Conjugation:	Unconjugated
Storage:	Store at -20°C as received.
Stability:	Stable for 12 months from date of receipt.
Predicted Protein Size:	81 kDa
Database Link:	<a href="#">NP_000103</a> <a href="#">Entrez Gene 13521 Mouse</a>
Background:	As a sulfate transporter, Slc26a2 may play a role in endochondral bone formation.
Synonyms:	D5S1708; DTD; DTDST; EDM4; MST153; MSTP157
Note:	Immunogen sequence homology: Dog: 100%; Rat: 100%; Horse: 100%; Human: 100%; Mouse: 100%; Sheep: 100%; Bovine: 100%; Pig: 93%; Guinea pig: 93%; Rabbit: 86%
Protein Families:	Druggable Genome, Transmembrane



[View online »](#)

**Product images:**

WB Suggested Anti-Slc26a2 Antibody; Titration:  
1.0 ug/ml; Positive Control: Mouse Heart