

## Product datasheet for **TA334173**

### **TBX5 Rabbit Polyclonal Antibody**

#### **Product data:**

Product Type:	Primary Antibodies
Applications:	IHC, WB
Recommended Dilution:	WB, IHC
Reactivity:	Human, Mouse
Host:	Rabbit
Isotype:	IgG
Clonality:	Polyclonal
Immunogen:	The immunogen for Anti-TBX5 Antibody: synthetic peptide directed towards the middle region of human TBX5. Synthetic peptide located within the following region: RMQSKEYPVVPRSTVRQKVASNHSPFSSERALSTSSNLGSQYQCENGVS
Formulation:	Liquid. Purified antibody supplied in 1x PBS buffer with 0.09% (w/v) sodium azide and 2% sucrose. <i>Note that this product is shipped as lyophilized powder to China customers.</i>
Purification:	Affinity Purified
Conjugation:	Unconjugated
Storage:	Store at -20°C as received.
Stability:	Stable for 12 months from date of receipt.
Predicted Protein Size:	39 kDa
Gene Name:	T-box 5
Database Link:	<a href="#">NP_000183</a> <a href="#">Entrez Gene 21388 Mouse</a> <a href="#">Entrez Gene 6910 Human</a> <a href="#">Q99593</a>



[View online »](#)

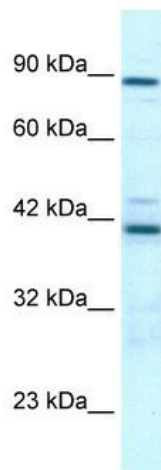
**Background:** TBX5 is a member of a phylogenetically conserved family of genes that share a common DNA-binding domain, the T-box. T-box genes encode transcription factors involved in the regulation of developmental processes. This gene is closely linked to related family member T-box 3 (ulnar mammary syndrome) on human chromosome 12. The encoded protein may play a role in heart development and specification of limb identity. Mutations in this gene have been associated with Holt-Oram syndrome, a developmental disorder affecting the heart and upper limbs.

**Synonyms:** HOS

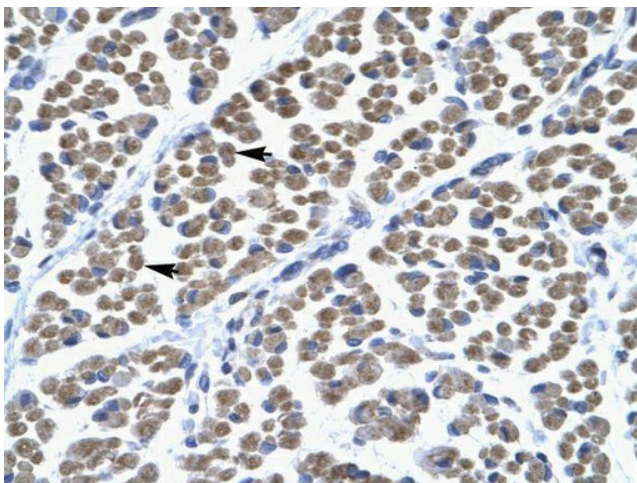
**Note:** Immunogen sequence homology: Dog: 100%; Pig: 100%; Rat: 100%; Human: 100%; Bovine: 100%; Rabbit: 100%; Guinea pig: 100%; Horse: 92%; Mouse: 92%

**Protein Families:** Druggable Genome, Transcription Factors

**Product images:**



WB Suggested Anti-TBX5 Antibody Titration: 0.5 ug/ml; Positive Control: Jurkat cell lysate



Rabbit Anti-TBX5 Antibody; Paraffin Embedded Tissue: Human Muscle; Cellular Data: Skeletal muscle cells; Antibody Concentration: 4.0-8.0 ug/ml; Magnification: 400X