

## Product datasheet for **TA334171**

### SLC12A3 Rabbit Polyclonal Antibody

#### Product data:

Product Type:	Primary Antibodies
Applications:	WB
Recommended Dilution:	WB
Reactivity:	Human
Host:	Rabbit
Isotype:	IgG
Clonality:	Polyclonal
Immunogen:	The immunogen for Anti-SLC12A3 Antibody: synthetic peptide directed towards the middle region of human SLC12A3. Synthetic peptide located within the following region: ALIVITLPIGRKKGKCPSSLYMAWLETLSQDLRPPVILIRGNQENVLTFYC
Formulation:	Liquid. Purified antibody supplied in 1x PBS buffer with 0.09% (w/v) sodium azide and 2% sucrose. <i>Note that this product is shipped as lyophilized powder to China customers.</i>
Purification:	Affinity Purified
Conjugation:	Unconjugated
Storage:	Store at -20°C as received.
Stability:	Stable for 12 months from date of receipt.
Predicted Protein Size:	114 kDa
Gene Name:	solute carrier family 12 member 3
Database Link:	<a href="#">NP_000330</a> <a href="#">Entrez Gene 6559 Human</a> <a href="#">P55017</a>



[View online »](#)

**Background:**

This gene encodes a renal thiazide-sensitive sodium-chloride cotransporter that is important for electrolyte homeostasis. This cotransporter mediates sodium and chloride reabsorption in the distal convoluted tubule. Mutations in this gene cause Gitelman syndrome, a disease similar to Bartter's syndrome, that is characterized by hypokalemic alkalosis combined with hypomagnesemia, low urinary calcium, and increased renin activity associated with normal blood pressure. This cotransporter is the target for thiazide diuretics that are used for treating high blood pressure. Multiple transcript variants encoding different isoforms have been found for this gene. [provided by RefSeq, Jul 2008]

**Synonyms:**

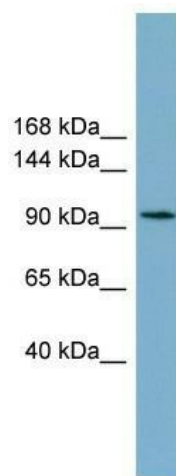
NCC; NCCT; TSC

**Note:**

Immunogen sequence homology: Dog: 100%; Pig: 100%; Rat: 100%; Horse: 100%; Human: 100%; Bovine: 100%; Rabbit: 100%; Guinea pig: 100%; Mouse: 93%; Zebrafish: 86%

**Protein Families:**

Druggable Genome, Transmembrane

**Product images:**

WB Suggested Anti-SLC12A3 Antibody Titration:  
0.2-1 ug/ml; Positive Control: ACHN cell lysate