

Product datasheet for **TA334166**

SLC10A2 Rabbit Polyclonal Antibody

Product data:

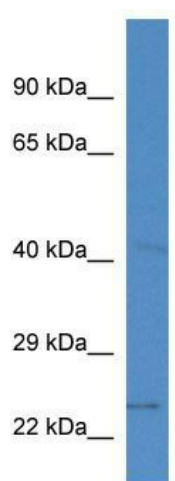
Product Type:	Primary Antibodies
Applications:	WB
Recommended Dilution:	WB
Reactivity:	Mouse
Host:	Rabbit
Isotype:	IgG
Clonality:	Polyclonal
Immunogen:	The immunogen for Anti-Slc10a2 Antibody: synthetic peptide corresponding to a region of Mouse. Synthetic peptide located within the following region: GCNVEVHKFLGHIKRPWGIFVGFLCQFGIMPLTGFILSVASGILPVQAVV
Formulation:	Liquid. Purified antibody supplied in 1x PBS buffer with 0.09% (w/v) sodium azide and 2% sucrose. <i>Note that this product is shipped as lyophilized powder to China customers.</i>
Purification:	Affinity Purified
Conjugation:	Unconjugated
Storage:	Store at -20°C as received.
Stability:	Stable for 12 months from date of receipt.
Predicted Protein Size:	38 kDa
Gene Name:	solute carrier family 10 member 2
Database Link:	NP_000443 Entrez Gene 20494 Mouse Q12908
Background:	Slc10a2 plays a critical role in the sodium-dependent reabsorption of bile acids from the lumen of the small intestine. It plays a key role in cholesterol metabolism.
Synonyms:	ASBT; IBAT; ISBT; NTCP2; PBAM
Note:	Immunogen sequence homology: Dog: 100%; Rat: 100%; Horse: 100%; Human: 100%; Rabbit: 93%; Pig: 86%; Mouse: 86%; Guinea pig: 86%



[View online »](#)

Protein Families: Druggable Genome, Transmembrane

Product images:



WB Suggested Anti-Slc10a2 Antibody; Titration:
1.0 ug/ml; Positive Control: Mouse Liver