

Product datasheet for **TA334165**

Sodium Iodide Symporter (SLC5A5) Rabbit Polyclonal Antibody

Product data:

Product Type:	Primary Antibodies
Applications:	WB
Recommended Dilution:	WB
Reactivity:	Human
Host:	Rabbit
Isotype:	IgG
Clonality:	Polyclonal
Immunogen:	The immunogen for Anti-SLC5A5 Antibody: synthetic peptide directed towards the middle region of human SLC5A5. Synthetic peptide located within the following region: PSEQTMRVLPSSAARCVALSVDNASGLLDLPALLPANDSSRAPSSGMDASRP
Formulation:	Liquid. Purified antibody supplied in 1x PBS buffer with 0.09% (w/v) sodium azide and 2% sucrose. <i>Note that this product is shipped as lyophilized powder to China customers.</i>
Purification:	Affinity Purified
Conjugation:	Unconjugated
Storage:	Store at -20°C as received.
Stability:	Stable for 12 months from date of receipt.
Predicted Protein Size:	69 kDa
Gene Name:	solute carrier family 5 member 5
Database Link:	NP_000444 Entrez Gene 6528 Human Q92911



[View online »](#)

Background:

The sodium-iodide symporter (NIS, or SLC5A5) is a key plasma membrane protein that mediates active I⁻ uptake in thyroid, lactating breast, and other tissues with an electrogenic stoichiometry of 2 Na⁺ per I⁻. In thyroid, NIS-mediated I⁻ uptake is the first step in the biosynthesis of iodine-containing thyroid hormones. The sodium-iodide symporter (NIS, or SLC5A5) is a key plasma membrane protein that mediates active I⁻ uptake in thyroid, lactating breast, and other tissues with an electrogenic stoichiometry of 2 Na⁺ per I⁻. In thyroid, NIS-mediated I⁻ uptake is the first step in the biosynthesis of iodine-containing thyroid hormones (Dohan et al., 2007 [PubMed 18077370]). [supplied by OMIM]. Publication Note: This RefSeq record includes a subset of the publications that are available for this gene. Please see the Entrez Gene record to access additional publications.

Synonyms:

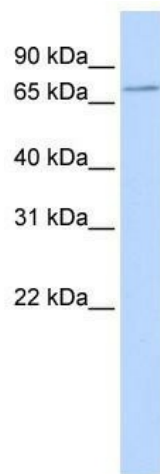
NIS; TDH1

Note:

Immunogen sequence homology: Human: 100%

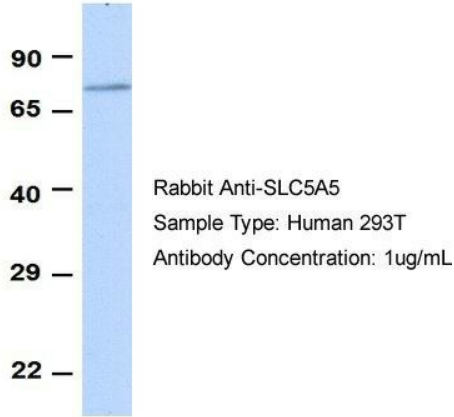
Protein Families:

Druggable Genome, Transmembrane

Product images:

WB Suggested Anti-SLC5A5 Antibody Titration:
0.2-1 ug/ml; ELISA Titer: 1:1562500; Positive
Control: 293T cell lysate; SLC5A5 is supported by
BioGPS gene expression data to be expressed in
HEK293T

SLC5A5



Host: Rabbit; Target Name: SLC5A5; Sample Tissue: 293T; Antibody Dilution: 1.0 µg/ml; SLC5A5 is supported by BioGPS gene expression data to be expressed in HEK293T