

Product datasheet for **TA334164**

Sodium Iodide Symporter (SLC5A5) Rabbit Polyclonal Antibody

Product data:

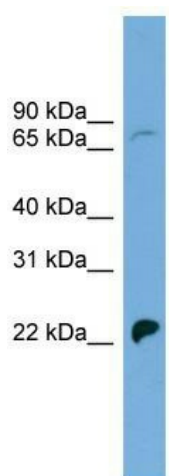
Product Type:	Primary Antibodies
Applications:	WB
Recommended Dilution:	WB
Reactivity:	Human
Host:	Rabbit
Isotype:	IgG
Clonality:	Polyclonal
Immunogen:	The immunogen for Anti-SLC5A5 Antibody: synthetic peptide directed towards the N terminal of human SLC5A5. Synthetic peptide located within the following region: TAVGGMKAVVWTDVVFQVWVWMLSGFWVVLARGVMLVGGPRQVLTLAQNHSR
Formulation:	Liquid. Purified antibody supplied in 1x PBS buffer with 0.09% (w/v) sodium azide and 2% sucrose. <i>Note that this product is shipped as lyophilized powder to China customers.</i>
Purification:	Affinity Purified
Conjugation:	Unconjugated
Storage:	Store at -20°C as received.
Stability:	Stable for 12 months from date of receipt.
Predicted Protein Size:	69 kDa
Gene Name:	solute carrier family 5 member 5
Database Link:	NP_000444 Entrez Gene 6528 Human Q92911
Background:	The sodium-iodide symporter (NIS, or SLC5A5) is a key plasma membrane protein that mediates active I ⁻ uptake in thyroid, lactating breast, and other tissues with an electrogenic stoichiometry of 2 Na ⁺ per I ⁻ . In thyroid, NIS-mediated I ⁻ uptake is the first step in the biosynthesis of iodine-containing thyroid hormones.
Synonyms:	NIS; TDH1
Note:	Immunogen sequence homology: Human: 100%; Rat: 93%; Horse: 79%; Mouse: 79%



[View online »](#)

Protein Families: Druggable Genome, Transmembrane

Product images:



WB Suggested Anti-SLC5A5 Antibody Titration:
0.2-1 ug/ml; ELISA Titer: 1:12500; Positive Control:
COLO205 cell lysate