

## Product datasheet for **TA334163**

### Twist (TWIST1) Rabbit Polyclonal Antibody

#### Product data:

Product Type:	Primary Antibodies
Applications:	WB
Recommended Dilution:	WB
Reactivity:	Human
Host:	Rabbit
Isotype:	IgG
Clonality:	Polyclonal
Immunogen:	The immunogen for Anti-TWIST1 Antibody is: synthetic peptide directed towards the N-terminal region of Human TWIST1. Synthetic peptide located within the following region: DLSLNSEEEPPDRQQPPSGKRGGRKRRSSRRSAGGGAGPGGAAGGGVGGGD
Formulation:	Liquid. Purified antibody supplied in 1x PBS buffer with 0.09% (w/v) sodium azide and 2% sucrose. <i>Note that this product is shipped as lyophilized powder to China customers.</i>
Purification:	Affinity Purified
Conjugation:	Unconjugated
Storage:	Store at -20°C as received.
Stability:	Stable for 12 months from date of receipt.
Predicted Protein Size:	22 kDa
Gene Name:	twist family bHLH transcription factor 1
Database Link:	<a href="#">NP_000465</a> <a href="#">Entrez Gene 7291 Human Q15672</a>
Background:	Basic helix-loop-helix (bHLH) transcription factors have been implicated in cell lineage determination and differentiation. The protein encoded by this gene is a bHLH transcription factor and shares similarity with another bHLH transcription factor, Dermo1. The strongest expression of this mRNA is in placental tissue; in adults, mesodermally derived tissues express this mRNA preferentially. Mutations in this gene have been found in patients with Saethre-Chotzen syndrome.



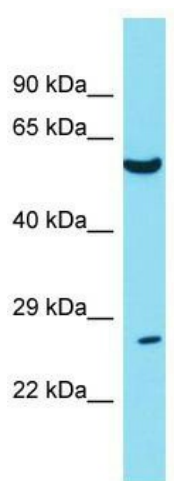
[View online »](#)

**Synonyms:** ACS3; bHLHa38; BPES2; BPES3; CRS; CRS1; CSO; SCS; TWIST

**Note:** Immunogen sequence homology: Rat: 100%; Horse: 100%; Human: 100%; Mouse: 100%; Bovine: 100%; Zebrafish: 83%

**Protein Families:** Druggable Genome

### Product images:



Host: Rabbit; Target Name: TWIST1; Sample Tissue: Uterus Tumor lysates; Antibody Dilution: 1.0 ug/ml