

Product datasheet for **TA334161**

NRAMP1 (SLC11A1) Rabbit Polyclonal Antibody

Product data:

Product Type:	Primary Antibodies
Applications:	WB
Recommended Dilution:	WB
Reactivity:	Human
Host:	Rabbit
Isotype:	IgG
Clonality:	Polyclonal
Immunogen:	The immunogen for Anti-SLC11A1 Antibody is: synthetic peptide directed towards the middle region of Human SLC11A1. Synthetic peptide located within the following region: GYEYVARPEQGALLRGLFLPSCPGCGHPELLQAVGIVGAIIMPHNIYLH
Formulation:	Liquid. Purified antibody supplied in 1x PBS buffer with 0.09% (w/v) sodium azide and 2% sucrose. <i>Note that this product is shipped as lyophilized powder to China customers.</i>
Purification:	Affinity Purified
Storage:	Store at -20°C as received.
Stability:	Stable for 12 months from date of receipt.
Predicted Protein Size:	60 kDa
Gene Name:	solute carrier family 11 member 1
Database Link:	NP_000569 Entrez Gene 6556 Human
Background:	SLC11A1 is a divalent transition metal (iron and manganese) transporter involved in iron metabolism and host resistance to certain pathogens. Macrophage-specific membrane transport function. It controls natural resistance to infection with intracellular parasites. Pathogen resistance involves sequestration of Fe ²⁺ and Mn ²⁺ , cofactors of both prokaryotic and eukaryotic catalases and superoxide dismutases, not only to protect the macrophage against its own generation of reactive oxygen species, but to deny the cations to the pathogen for synthesis of its protective enzymes.
Synonyms:	LSH; NRAMP; NRAMP1



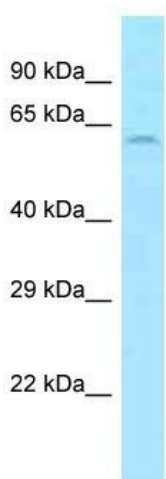
[View online »](#)

Note: Immunogen sequence homology: Human: 100%; Pig: 93%; Rabbit: 93%; Guinea pig: 93%; Rat: 86%; Goat: 86%; Horse: 86%; Sheep: 86%; Bovine: 86%

Protein Families: Transmembrane

Protein Pathways: Lysosome

Product images:



Host: Rabbit
Target Name: SLC11A1
Sample Tissue: HT1080 Cell Lysate
Antibody Dilution: 1.0 μ g/ml

Host: Rabbit; Target Name: SLC11A1; Sample Tissue: HT1080 Whole Cell lysates; Antibody Dilution: 1.0 ug/ml