

Product datasheet for **TA334159**

GLUT9 (SLC2A9) Rabbit Polyclonal Antibody

Product data:

Product Type:	Primary Antibodies
Applications:	WB
Recommended Dilution:	WB
Reactivity:	Human
Host:	Rabbit
Isotype:	IgG
Clonality:	Polyclonal
Immunogen:	The immunogen for Anti-SLC2A9 Antibody: synthetic peptide directed towards the middle region of human SLC2A9. Synthetic peptide located within the following region: VTVIVTMACYQLCGLNAIWFYTNISIFGKAGIPPAKIPYVTLSTGGIETL
Formulation:	Liquid. Purified antibody supplied in 1x PBS buffer with 0.09% (w/v) sodium azide and 2% sucrose. <i>Note that this product is shipped as lyophilized powder to China customers.</i>
Purification:	Affinity Purified
Conjugation:	Unconjugated
Storage:	Store at -20°C as received.
Stability:	Stable for 12 months from date of receipt.
Predicted Protein Size:	56 kDa
Gene Name:	solute carrier family 2 member 9
Database Link:	NP_001001290 Entrez Gene 56606 Human Q9NRM0



[View online »](#)

Background:

SLC2A9 is a member of the SLC2A facilitative glucose transporter family. Members of this family play a significant role in maintaining glucose homeostasis. SLC2A9 may play a role in the development and survival of chondrocytes in cartilage matrices. This gene encodes a member of the SLC2A facilitative glucose transporter family. Members of this family play a significant role in maintaining glucose homeostasis. The encoded protein may play a role in the development and survival of chondrocytes in cartilage matrices. Two transcript variants encoding distinct isoforms have been identified for this gene.

Synonyms:

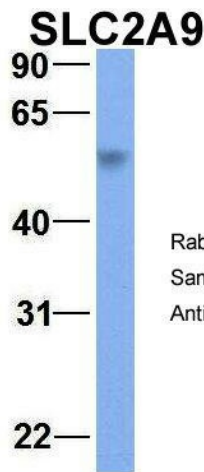
GLUT9; GLUTX; UAQL2; URATV1

Note:

Immunogen sequence homology: Human: 100%; Horse: 93%; Pig: 91%; Guinea pig: 91%; Dog: 86%; Mouse: 86%; Bovine: 86%; Rat: 79%; Rabbit: 79%

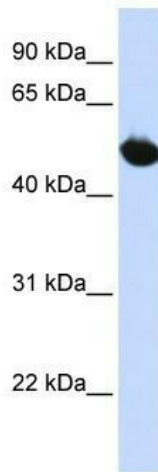
Protein Families:

Transmembrane

Product images:


Rabbit Anti-SLC2A9
Sample Type: Human Fetal Lung
Antibody Concentration: 1ug/mL

Host: Rabbit; Target Name: SLC2A9; Sample Tissue: Human Fetal Lung; Antibody Dilution: 1.0 ug/ml



WB Suggested Anti-SLC2A9 Antibody Titration: 0.2-1 ug/ml; ELISA Titer: 1:1562500; Positive Control: HepG2 cell lysate; SLC2A9 is supported by BioGPS gene expression data to be expressed in HepG2