

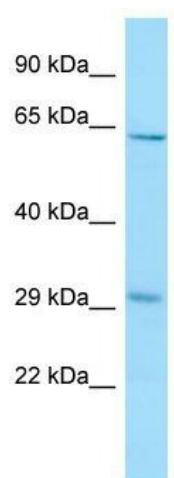
## Product datasheet for **TA334158**

### REEP3 Rabbit Polyclonal Antibody

#### Product data:

Product Type:	Primary Antibodies
Applications:	WB
Recommended Dilution:	WB
Reactivity:	Human
Host:	Rabbit
Isotype:	IgG
Clonality:	Polyclonal
Immunogen:	The immunogen for Anti-REEP3 Antibody is: synthetic peptide directed towards the C-terminal region of Human REEP3. Synthetic peptide located within the following region: HDLTTIQGDEPVGQRPYQPLPEAKKSKPAPSESAGYGIPLKDGDEKTDE
Formulation:	Liquid. Purified antibody supplied in 1x PBS buffer with 0.09% (w/v) sodium azide and 2% sucrose.
Purification:	Affinity Purified
Conjugation:	Unconjugated
Storage:	Store at -20°C as received.
Stability:	Stable for 12 months from date of receipt.
Predicted Protein Size:	28 kDa
Gene Name:	receptor accessory protein 3
Database Link:	<a href="#">NP_001001330</a> <a href="#">Entrez Gene 221035 Human</a> <a href="#">Q6NUK4</a>
Background:	REEP3 may enhance the cell surface expression of odorant receptors.
Synonyms:	C10orf74; Yip2b
Note:	Immunogen sequence homology: Human: 100%; Pig: 93%; Rat: 93%; Horse: 86%; Rabbit: 79%; Guinea pig: 79%
Protein Families:	Druggable Genome, Transmembrane


[View online »](#)

**Product images:**


WB Suggested Anti-REEP3 Antibody; Titration: 1.0 ug/ml; Positive Control: MCF7 Whole Cell