

## Product datasheet for **TA334157**

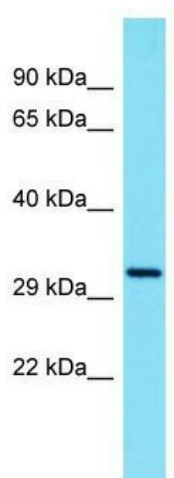
### **C16orf42 (TSR3) Rabbit Polyclonal Antibody**

#### **Product data:**

Product Type:	Primary Antibodies
Applications:	WB
Recommended Dilution:	WB
Reactivity:	Human
Host:	Rabbit
Isotype:	IgG
Clonality:	Polyclonal
Immunogen:	The immunogen for Anti-TSR3 Antibody is: synthetic peptide directed towards the C-terminal region of Human TSR3. Synthetic peptide located within the following region: FGNPNRPVASTRLPSDTDDSDASEDPGPGAERGGASSSCCEEEQTQGRGA
Formulation:	Liquid. Purified antibody supplied in 1x PBS buffer with 0.09% (w/v) sodium azide and 2% sucrose. <i>Note that this product is shipped as lyophilized powder to China customers.</i>
Purification:	Affinity Purified
Conjugation:	Unconjugated
Storage:	Store at -20°C as received.
Stability:	Stable for 12 months from date of receipt.
Predicted Protein Size:	33 kDa
Gene Name:	TSR3, acp transferase ribosome maturation factor
Database Link:	<a href="#">NP_001001410</a> <a href="#">Entrez Gene 115939 Human</a> <a href="#">Q9UJK0</a>
Background:	TSR3 is a probable pre-rRNA processing protein involved in ribosome biogenesis.
Synonyms:	C16orf42
Note:	Immunogen sequence homology: Human: 100%



[View online »](#)

**Product images:**

Host: Rabbit; Target Name: TSR3; Sample Tissue: HT1080 Whole Cell lysates; Antibody Dilution: 1.0 ug/ml.