

Product datasheet for **TA334156**

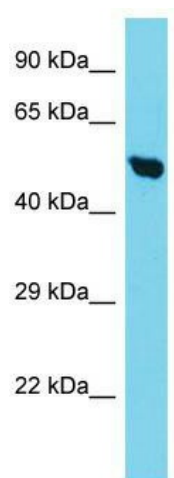
TIMM50 Rabbit Polyclonal Antibody

Product data:

Product Type:	Primary Antibodies
Applications:	WB
Recommended Dilution:	WB
Reactivity:	Human
Host:	Rabbit
Isotype:	IgG
Clonality:	Polyclonal
Immunogen:	The immunogen for Anti-TIMM50 Antibody is: synthetic peptide directed towards the C-terminal region of Human TIMM50. Synthetic peptide located within the following region: EDDPLAAFKQRQSRLEQEEQQRLAELSKSNKQNLFLGSLTSRLWPRSKQP
Formulation:	Liquid. Purified antibody supplied in 1x PBS buffer with 0.09% (w/v) sodium azide and 2% sucrose. <i>Note that this product is shipped as lyophilized powder to China customers.</i>
Purification:	Affinity Purified
Conjugation:	Unconjugated
Storage:	Store at -20°C as received.
Stability:	Stable for 12 months from date of receipt.
Predicted Protein Size:	50 kDa
Gene Name:	translocase of inner mitochondrial membrane 50
Database Link:	NP_001001563 Entrez Gene 92609 Human Q3ZCQ8
Background:	The function of this protein remains unknown.
Synonyms:	TIM50; TIM50L
Note:	Immunogen sequence homology: Dog: 100%; Pig: 100%; Rat: 100%; Horse: 100%; Human: 100%; Mouse: 100%; Bovine: 100%; Rabbit: 100%; Guinea pig: 93%; Zebrafish: 75%



[View online »](#)

Product images:

Host: Rabbit; Target Name: TIMM50; Sample Tissue: HepG2 Whole Cell lysates; Antibody Dilution: 1.0 ug/ml.