

## Product datasheet for **TA334155**

### Zfp36l2 Rabbit Polyclonal Antibody

#### Product data:

Product Type:	Primary Antibodies
Applications:	IHC, WB
Recommended Dilution:	WB, IHC
Reactivity:	Human
Host:	Rabbit
Isotype:	IgG
Clonality:	Polyclonal
Immunogen:	The immunogen for Anti-ZFP36L2 Antibody: synthetic peptide directed towards the N terminal of human ZFP36L2. Synthetic peptide located within the following region: VGTPVAAAPSSGFAPGFLRRHSASNLHALAHPAPSPGSCSPKFGAANGS
Formulation:	Liquid. Purified antibody supplied in 1x PBS buffer with 0.09% (w/v) sodium azide and 2% sucrose. <i>Note that this product is shipped as lyophilized powder to China customers.</i>
Purification:	Affinity Purified
Conjugation:	Unconjugated
Storage:	Store at -20°C as received.
Stability:	Stable for 12 months from date of receipt.
Predicted Protein Size:	51 kDa
Gene Name:	zinc finger protein 36, C3H type-like 2
Database Link:	<a href="#">NP_001001806</a> <a href="#">Entrez Gene 678 Human</a> <a href="#">P23949</a>



[View online »](#)

**Background:**

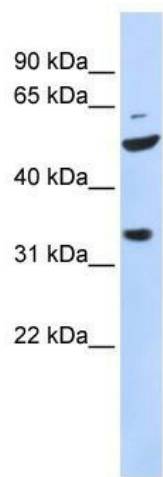
ZFP36L2 is a member of the TIS11 family of early response genes. Family members are induced by various agonists such as the phorbol ester TPA and the polypeptide mitogen EGF. The encoded protein contains a distinguishing putative zinc finger domain with a repeating cys-his motif. This putative nuclear transcription factor most likely functions in regulating the response to growth factors. This gene is a member of the TIS11 family of early response genes. Family members are induced by various agonists such as the phorbol ester TPA and the polypeptide mitogen EGF. The encoded protein contains a distinguishing putative zinc finger domain with a repeating cys-his motif. This putative nuclear transcription factor most likely functions in regulating the response to growth factors. Sequence Note: The RefSeq transcript and protein were derived from transcript and genomic sequence to make the sequence consistent with the reference genome assembly. The genomic coordinates used for the transcript record were based on alignments.

**Synonyms:**

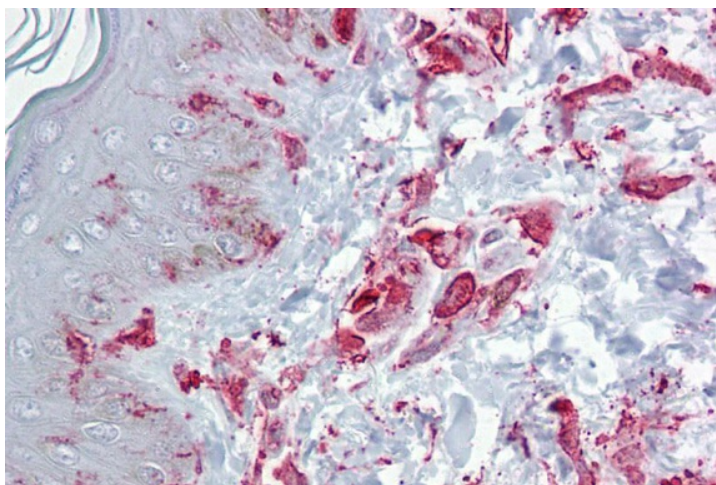
BRF2; ERF-2; ERF2; RNF162C; TIS11D

**Note:**

Immunogen sequence homology: Bovine: 92%; Guinea pig: 85%; Mouse: 84%; Rat: 84%

**Product images:**

WB Suggested Anti-ZFP36L2 Antibody Titration:  
0.2-1 ug/ml; ELISA Titer: 1:62500; Positive Control:  
721\_B cell lysate



Immunohistochemistry with Skin, dermal fibroblasts tissue at an antibody concentration of 5 ug/ml using anti-ZFP36L2 antibody