

Product datasheet for **TA334150**

ZNF182 Rabbit Polyclonal Antibody

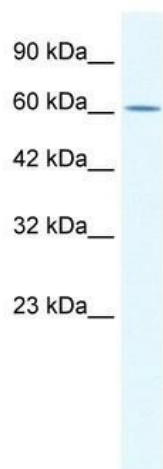
Product data:

Product Type:	Primary Antibodies
Applications:	IHC, WB
Recommended Dilution:	WB, IHC
Reactivity:	Human
Host:	Rabbit
Isotype:	IgG
Clonality:	Polyclonal
Immunogen:	The immunogen for Anti-ZNF21 Antibody: synthetic peptide directed towards the middle region of human ZNF21. Synthetic peptide located within the following region: RTHTGEKPYACTECGKAFREKSTFTVHQRHTHTGEKPYKCTECGKAFTQKS
Formulation:	Liquid. Purified antibody supplied in 1x PBS buffer with 0.09% (w/v) sodium azide and 2% sucrose.
Purification:	Affinity Purified
Conjugation:	Unconjugated
Storage:	Store at -20°C as received.
Stability:	Stable for 12 months from date of receipt.
Predicted Protein Size:	72 kDa
Gene Name:	zinc finger protein 182
Database Link:	NP_001007089 Entrez Gene 7569 Human P17025
Background:	Located on chromosome X, ZNF21 encodes a zinc finger protein 21.
Synonyms:	HHZ150; KOX14; Zfp182; ZNF21
Note:	Immunogen sequence homology: Dog: 100%; Pig: 100%; Rat: 100%; Horse: 100%; Human: 100%; Mouse: 100%; Bovine: 100%; Rabbit: 100%

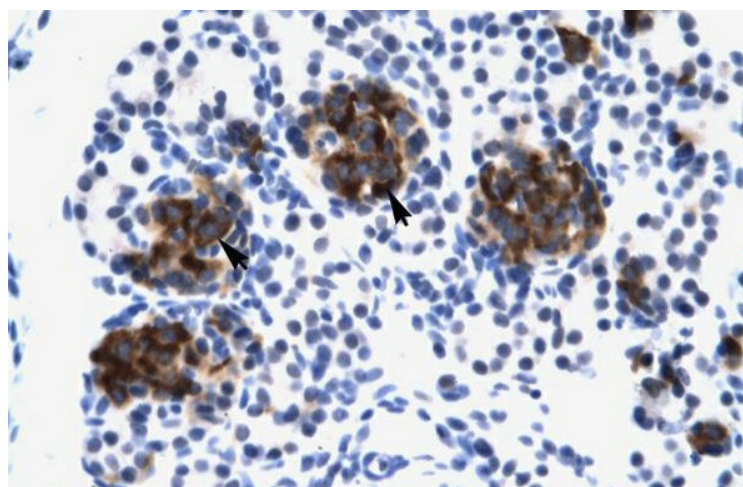


[View online »](#)

Product images:



WB Suggested Anti-ZNF21 Antibody Titration: 0.2-1 ug/ml; Positive Control: HepG2 cell lysate



Human Pancreas