

Product datasheet for **TA334148**

SLC7A2 Rabbit Polyclonal Antibody

Product data:

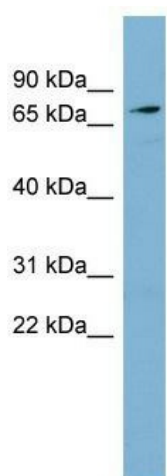
Product Type:	Primary Antibodies
Applications:	WB
Recommended Dilution:	WB
Reactivity:	Human
Host:	Rabbit
Isotype:	IgG
Clonality:	Polyclonal
Immunogen:	The immunogen for Anti-SLC7A2 Antibody: synthetic peptide directed towards the middle region of human SLC7A2. Synthetic peptide located within the following region: VANWKISEEFLKNISASAREPPSENGTSIYGAGGFMPYGFTGLAGAATC
Formulation:	Liquid. Purified antibody supplied in 1x PBS buffer with 0.09% (w/v) sodium azide and 2% sucrose. <i>Note that this product is shipped as lyophilized powder to China customers.</i>
Purification:	Affinity Purified
Conjugation:	Unconjugated
Storage:	Store at -20°C as received.
Stability:	Stable for 12 months from date of receipt.
Predicted Protein Size:	72 kDa
Gene Name:	solute carrier family 7 member 2
Database Link:	NP_001008539 Entrez Gene 6542 Human P52569
Background:	SLC7A2 is a low-affinity, high capacity permease involved in the transport of the cationic amino acids (arginine, lysine and ornithine). SLC7A2 plays a regulatory role in classical or alternative activation of macrophages.
Synonyms:	ATRC2; CAT2; HCAT2
Note:	Immunogen sequence homology: Pig: 100%; Rat: 100%; Human: 100%; Mouse: 100%; Horse: 93%; Bovine: 93%; Rabbit: 93%; Dog: 86%



[View online »](#)

Protein Families: Druggable Genome, Transmembrane

Product images:



WB Suggested Anti-SLC7A2 Antibody Titration:
0.2-1 ug/ml; Positive Control: OVCAR-3 cell lysate