

Product datasheet for **TA334147**

SLC35D3 Rabbit Polyclonal Antibody

Product data:

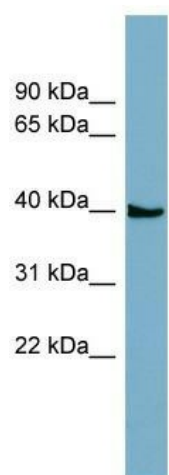
Product Type:	Primary Antibodies
Applications:	WB
Recommended Dilution:	WB
Reactivity:	Human
Host:	Rabbit
Isotype:	IgG
Clonality:	Polyclonal
Immunogen:	The immunogen for Anti-SLC35D3 Antibody: synthetic peptide directed towards the N terminal of human SLC35D3. Synthetic peptide located within the following region: RYQFSFLTIVQCLTSSTAALSLELLRRLGLIAVPPFGLSLARSFAGVAVL
Formulation:	Liquid. Purified antibody supplied in 1x PBS buffer with 0.09% (w/v) sodium azide and 2% sucrose. <i>Note that this product is shipped as lyophilized powder to China customers.</i>
Purification:	Affinity Purified
Conjugation:	Unconjugated
Storage:	Store at -20°C as received.
Stability:	Stable for 12 months from date of receipt.
Predicted Protein Size:	44 kDa
Gene Name:	solute carrier family 35 member D3
Database Link:	NP_001008783 Entrez Gene 340146 Human Q5M8T2
Background:	SLC35D3 may play a role in hemostasis as a regulator of the biosynthesis of platelet-dense granules.
Synonyms:	FRCL1
Note:	Immunogen sequence homology: Dog: 100%; Pig: 100%; Rat: 100%; Horse: 100%; Human: 100%; Mouse: 100%; Bovine: 100%; Rabbit: 100%; Guinea pig: 100%; Zebrafish: 79%



[View online »](#)

Protein Families: Transmembrane

Product images:



WB Suggested Anti-SLC35D3 Antibody Titration:
0.2-1 ug/ml; ELISA Titer: 1:62500; Positive Control:
ACHN cell lysate