

Product datasheet for **TA334146**

SLC10A5 Rabbit Polyclonal Antibody

Product data:

Product Type:	Primary Antibodies
Applications:	IHC, WB
Recommended Dilution:	WB, IHC
Reactivity:	Human
Host:	Rabbit
Isotype:	IgG
Clonality:	Polyclonal
Immunogen:	The immunogen for Anti-SLC10A5 Antibody: synthetic peptide directed towards the C terminal of human SLC10A5. Synthetic peptide located within the following region: GYSFAKVCTLPLPVCKTVAIESGMLNSFLALAVIQLSFPQSKANLASVAP
Formulation:	Liquid. Purified antibody supplied in 1x PBS buffer with 0.09% (w/v) sodium azide and 2% sucrose. <i>Note that this product is shipped as lyophilized powder to China customers.</i>
Purification:	Affinity Purified
Conjugation:	Unconjugated
Storage:	Store at -20°C as received.
Stability:	Stable for 12 months from date of receipt.
Predicted Protein Size:	48 kDa
Gene Name:	solute carrier family 10 member 5
Database Link:	NP_001010893 Entrez Gene 347051 Human Q5PT55
Background:	SLC10A5 is a new member of Solute Carrier Family 10 (SLC10) and the function remains unknown.
Synonyms:	P5
Note:	Immunogen sequence homology: Human: 100%; Rat: 91%; Horse: 86%; Pig: 79%
Protein Families:	Druggable Genome, Transmembrane

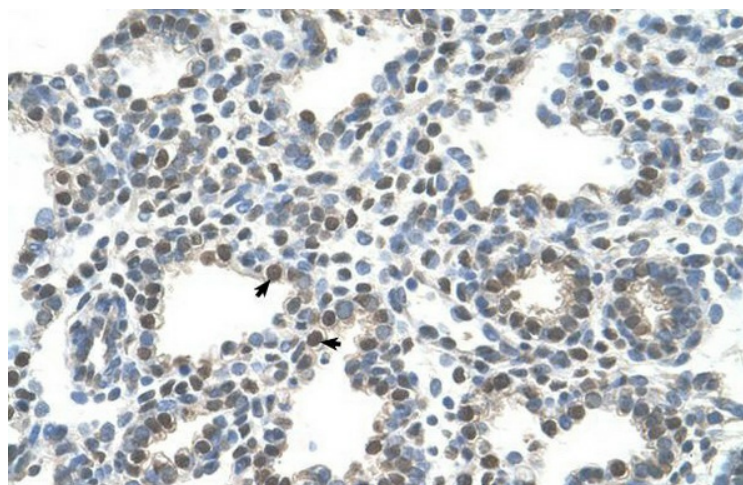


[View online »](#)

Product images:



WB Suggested Anti-SLC10A5 Antibody Titration:
1.25 ug/ml; Positive Control: Jurkat cell lysate



Human Lung