

Product datasheet for **TA334145**

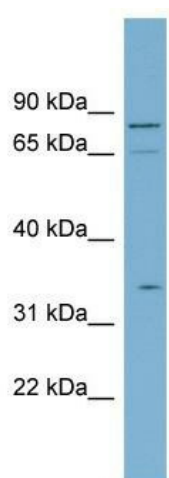
SLC5A9 Rabbit Polyclonal Antibody

Product data:

Product Type:	Primary Antibodies
Applications:	WB
Recommended Dilution:	WB
Reactivity:	Human
Host:	Rabbit
Isotype:	IgG
Clonality:	Polyclonal
Immunogen:	The immunogen for Anti-SLC5A9 Antibody: synthetic peptide directed towards the N terminal of human SLC5A9. Synthetic peptide located within the following region: MSKELAAMGPGASGDGVRTETAPHIALDSRVGLHAYDISVVVIYFVFVIA
Formulation:	Liquid. Purified antibody supplied in 1x PBS buffer with 0.09% (w/v) sodium azide and 2% sucrose.
Purification:	Affinity Purified
Conjugation:	Unconjugated
Storage:	Store at -20°C as received.
Stability:	Stable for 12 months from date of receipt.
Predicted Protein Size:	76 kDa
Gene Name:	solute carrier family 5 member 9
Database Link:	NP_001011547 Entrez Gene 200010 Human Q2M3M2
Background:	SLC5A9 is involved in sodium-dependent transport of D-mannose, D-glucose and D-fructose.
Synonyms:	SGLT4
Note:	Immunogen sequence homology: Human: 100%; Horse: 86%
Protein Families:	Transmembrane



[View online »](#)

Product images:

WB Suggested Anti-SLC5A9 Antibody Titration:
0.2-1 ug/ml; ELISA Titer: 1:312500; Positive
Control: PANC1 cell lysate