

## Product datasheet for **TA334144**

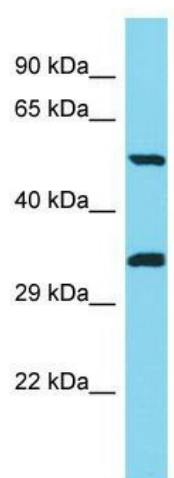
### PNLIPRP3 Rabbit Polyclonal Antibody

#### Product data:

Product Type:	Primary Antibodies
Applications:	WB
Recommended Dilution:	WB
Reactivity:	Human
Host:	Rabbit
Isotype:	IgG
Clonality:	Polyclonal
Immunogen:	The immunogen for Anti-PNLIPRP3 Antibody is: synthetic peptide directed towards the C-terminal region of Human PNLIPRP3. Synthetic peptide located within the following region: IVSGKLEPGMTYTKLIDADVNVGNITSVQFIWKKHLFEDSQNKLGAEEMV
Formulation:	Liquid. Purified antibody supplied in 1x PBS buffer with 0.09% (w/v) sodium azide and 2% sucrose. <i>Note that this product is shipped as lyophilized powder to China customers.</i>
Purification:	Affinity Purified
Conjugation:	Unconjugated
Storage:	Store at -20°C as received.
Stability:	Stable for 12 months from date of receipt.
Predicted Protein Size:	52 kDa
Gene Name:	pancreatic lipase related protein 3
Database Link:	<a href="#">NP_001011709</a> <a href="#">Entrez Gene 119548 Human</a> <a href="#">Q17RR3</a>
Background:	The function of this protein remains unknown.
Synonyms:	OTTHUMP00000020563; pancreatic lipase-related protein 3
Note:	Immunogen sequence homology: Human: 100%
Protein Families:	Druggable Genome



[View online »](#)

**Product images:**

Host: Rabbit; Target Name: PNLIPRP3; Sample  
Tissue: Jurkat Whole Cell lysates; Antibody  
Dilution: 1.0 ug/ml.