

Product datasheet for **TA334143**

SLC45A2 Rabbit Polyclonal Antibody

Product data:

Product Type:	Primary Antibodies
Applications:	WB
Recommended Dilution:	WB
Reactivity:	Human
Host:	Rabbit
Isotype:	IgG
Clonality:	Polyclonal
Immunogen:	The immunogen for Anti-SLC45A2 Antibody: synthetic peptide directed towards the C terminal of human SLC45A2. Synthetic peptide located within the following region: IGWTAFLSNMLFFTFDFMGQIVYRGDPYSAHNSTEFLIYERGVEVGCWGFC
Formulation:	Liquid. Purified antibody supplied in 1x PBS buffer with 0.09% (w/v) sodium azide and 2% sucrose.
Purification:	Affinity Purified
Conjugation:	Unconjugated
Storage:	Store at -20°C as received.
Stability:	Stable for 12 months from date of receipt.
Predicted Protein Size:	51 kDa
Gene Name:	solute carrier family 45 member 2
Database Link:	NP_001012527 Entrez Gene 51151 Human Q9UMX9



[View online »](#)

Background:

SLC45A2 is a melanocyte differentiation antigen that is expressed in a high percentage of melanoma cell lines. A similar sequence gene in medaka, 'B,' encodes a transporter that mediates melanin synthesis. Mutations in this gene are a cause of oculocutaneous albinism type 4. The protein encoded by this gene encodes a melanocyte differentiation antigen that is expressed in a high percentage of melanoma cell lines. A similar sequence gene in medaka, 'B,' encodes a transporter that mediates melanin synthesis. Mutations in this gene are a cause of oculocutaneous albinism type 4. Alternative splicing results in multiple transcript variants encoding different isoforms.

Synonyms:

1A1; AIM1; MATP; OCA4; SHEP5

Note:

Immunogen sequence homology: Rat: 100%; Human: 100%; Dog: 93%; Pig: 93%; Horse: 93%; Mouse: 86%; Bovine: 86%; Guinea pig: 86%; Rabbit: 79%

Protein Families:

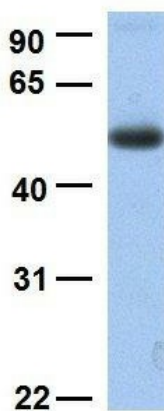
Druggable Genome, Transmembrane

Product images:



WB Suggested Anti-SLC45A2 Antibody Titration: 0.2-1 ug/ml; Positive Control: Jurkat cell lysate

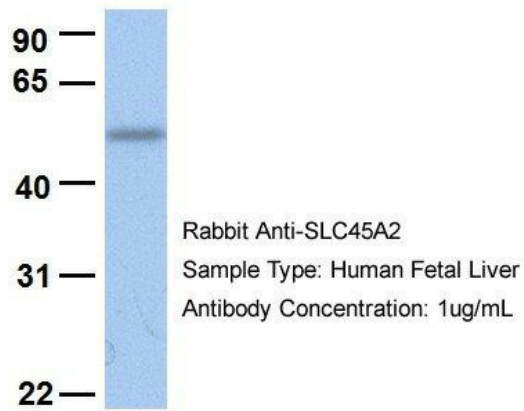
SLC45A2



Rabbit Anti-SLC45A2
Sample Type: Human Fetal Lung
Antibody Concentration: 1ug/mL

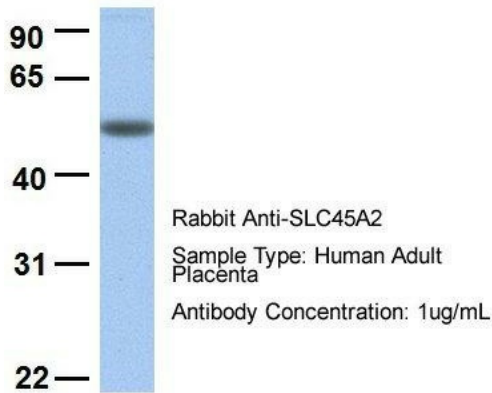
Host: Rabbit; Target Name: SLC45A2; Sample Tissue: Human Fetal Lung; Antibody Dilution: 1.0 ug/ml

SLC45A2



Host: Rabbit; Target Name: SLC45A2; Sample Tissue: Human Fetal Liver; Antibody Dilution: 1.0 ug/ml

SLC45A2



Host: Rabbit; Target Name: SLC45A2; Sample Tissue: Human Adult Placenta; Antibody Dilution: 1.0 ug/ml