

## Product datasheet for TA334142

### DPRX Rabbit Polyclonal Antibody

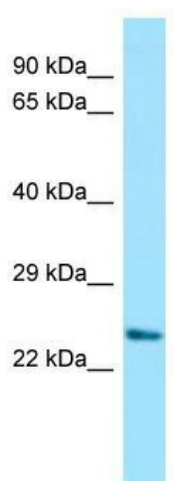
#### Product data:

Product Type:	Primary Antibodies
Applications:	WB
Recommended Dilution:	WB
Reactivity:	Human
Host:	Rabbit
Isotype:	IgG
Clonality:	Polyclonal
Immunogen:	The immunogen for Anti-DPRX Antibody is: synthetic peptide directed towards the N-terminal region of Human DPRX. Synthetic peptide located within the following region: KEMASKIDIHPTVLQVWFKNHRAKLKKAKCKHIHQKQETPQPIPEGGS
Formulation:	Liquid. Purified antibody supplied in 1x PBS buffer with 0.09% (w/v) sodium azide and 2% sucrose.
Purification:	Affinity Purified
Conjugation:	Unconjugated
Storage:	Store at -20°C as received.
Stability:	Stable for 12 months from date of receipt.
Predicted Protein Size:	22 kDa
Gene Name:	divergent-paired related homeobox
Database Link:	<a href="#">NP_001012746</a> <a href="#">Entrez Gene 503834 Human</a> <a href="#">A6NFQ7</a>
Background:	Homeobox genes encode DNA-binding proteins, many of which are thought to be involved in early embryonic development. Homeobox genes encode a DNA-binding domain of 60 to 63 amino acids referred to as the homeodomain. This gene is a member of the DPRX homeobox gene family. Evidence of mRNA expression has not yet been found for this gene. Multiple, related processed pseudogenes have been found which are thought to reflect expression of this gene in the germ line or embryonic cells.
Synonyms:	DPRX


[View online »](#)

**Note:** Immunogen sequence homology: Human: 100%

**Product images:**



Host: Rabbit; Target Name: DPRX; Sample Tissue: 293T Whole Cell lysates; Antibody Dilution: 1.0 ug/ml