

Product datasheet for **TA334141**

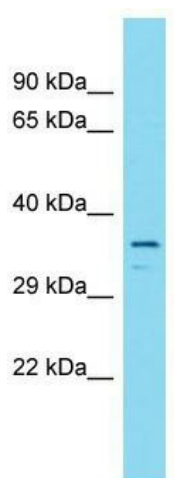
C16orf93 (CCDC189) Rabbit Polyclonal Antibody

Product data:

Product Type:	Primary Antibodies
Applications:	WB
Recommended Dilution:	WB
Reactivity:	Human
Host:	Rabbit
Isotype:	IgG
Clonality:	Polyclonal
Immunogen:	The immunogen for Anti-C16orf93 Antibody is: synthetic peptide directed towards the C-terminal region of Human C16orf93. Synthetic peptide located within the following region: ETVAPPEPEPSHIHVLRAYIKTQVNKELEQLQGLVEERLKASEERLSSKL
Formulation:	Liquid. Purified antibody supplied in 1x PBS buffer with 0.09% (w/v) sodium azide and 2% sucrose. <i>Note that this product is shipped as lyophilized powder to China customers.</i>
Purification:	Affinity Purified
Conjugation:	Unconjugated
Storage:	Store at -20°C as received.
Stability:	Stable for 12 months from date of receipt.
Predicted Protein Size:	37 kDa
Gene Name:	coiled-coil domain containing 189
Database Link:	NP_001014979 Entrez Gene 90835 Human A1A4V9
Background:	The function of this protein remains unknown.
Synonyms:	C16orf93
Note:	Immunogen sequence homology: Pig: 100%; Rat: 100%; Human: 100%; Guinea pig: 92%; Dog: 85%; Horse: 85%



[View online »](#)

Product images:

Host: Rabbit; Target Name: C16orf93; Sample Tissue: Fetal Brain lysates; Antibody Dilution: 1.0 ug/ml.