

Product datasheet for **TA334139**

SLC27A6 Rabbit Polyclonal Antibody

Product data:

Product Type:	Primary Antibodies
Applications:	IHC, WB
Recommended Dilution:	WB
Reactivity:	Human
Host:	Rabbit
Isotype:	IgG
Clonality:	Polyclonal
Immunogen:	The immunogen for Anti-SLC27A6 Antibody: synthetic peptide directed towards the middle region of human SLC27A6. Synthetic peptide located within the following region: KSTCLYIFTSGTTGLPKAAVISQLQVLRGSAVLWAFGCTAHDIVYITLPL
Formulation:	Liquid. Purified antibody supplied in 1x PBS buffer with 0.09% (w/v) sodium azide and 2% sucrose. <i>Note that this product is shipped as lyophilized powder to China customers.</i>
Purification:	Affinity Purified
Conjugation:	Unconjugated
Storage:	Store at -20°C as received.
Stability:	Stable for 12 months from date of receipt.
Predicted Protein Size:	70 kDa
Gene Name:	solute carrier family 27 member 6
Database Link:	NP_001017372 Entrez Gene 28965 Human Q9Y2P4
Background:	SLC27A6 is a member of the fatty acid transport protein family (FATP). FATPs are involved in the uptake of long-chain fatty acids and have unique expression patterns. Alternatively spliced transcript variants encoding the same protein have been found for this gene. This gene encodes a member of the fatty acid transport protein family (FATP). FATPs are involved in the uptake of long-chain fatty acids and have unique expression patterns. Alternatively spliced transcript variants encoding the same protein have been found for this gene.



[View online »](#)

Synonyms: ACSVL2; FACVL2; FATP6; VLCS-H1

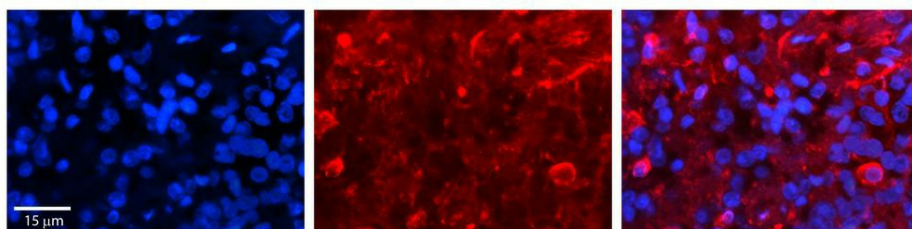
Note: Immunogen sequence homology: Dog: 100%; Pig: 100%; Rat: 100%; Horse: 100%; Human: 100%; Mouse: 100%; Bovine: 100%; Rabbit: 100%; Zebrafish: 100%; Guinea pig: 100%

Protein Pathways: PPAR signaling pathway

Product images:



WB Suggested Anti-SLC27A6 Antibody Titration: 0.2-1 ug/ml; ELISA Titer: 1:1562500; Positive Control: MCF7 cell lysate; SLC27A6 is supported by BioGPS gene expression data to be expressed in MCF7



Rabbit Anti-SLC27A6 Antibody; Formalin Fixed Paraffin Embedded Tissue: Human Pineal Tissue; Observed Staining: Membrane and cytoplasmic in cell bodies of pinealocytes and their processes; Primary Antibody Concentration: 1:100; Other Working Concentrations