

## Product datasheet for **TA334137**

### RPS16 Rabbit Polyclonal Antibody

#### Product data:

Product Type:	Primary Antibodies
Applications:	IHC, WB
Recommended Dilution:	WB, IHC
Reactivity:	Human
Host:	Rabbit
Isotype:	IgG
Clonality:	Polyclonal
Immunogen:	The immunogen for Anti-RPS16 Antibody: synthetic peptide directed towards the N terminal of human RPS16. Synthetic peptide located within the following region: SKGPLQSVQVFGRRKKTATAVAHCKRGNGLIKVNGRPLEMIEPRTLQYKLL
Formulation:	Liquid. Purified antibody supplied in 1x PBS buffer with 0.09% (w/v) sodium azide and 2% sucrose. <i>Note that this product is shipped as lyophilized powder to China customers.</i>
Purification:	Affinity Purified
Conjugation:	Unconjugated
Storage:	Store at -20°C as received.
Stability:	Stable for 12 months from date of receipt.
Predicted Protein Size:	16 kDa
Gene Name:	ribosomal protein S16
Database Link:	<a href="#">NP_001011</a> <a href="#">Entrez Gene 6217 Human</a> <a href="#">P62249</a>

**Background:** Ribosomes, the organelles that catalyze protein synthesis, consist of a small 40S subunit and a large 60S subunit. Together these subunits are composed of 4 RNA species and approximately 80 structurally distinct proteins. RPS16 is a ribosomal protein that is a component of the 40S subunit. The protein belongs to the S9P family of ribosomal proteins. It is located in the cytoplasm. As is typical for genes encoding ribosomal proteins, there are multiple processed pseudogenes of this gene dispersed through the genome.



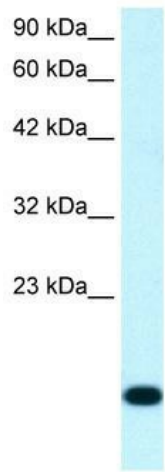
[View online »](#)

**Synonyms:** S16

**Note:** Immunogen sequence homology: Dog: 100%; Pig: 100%; Rat: 100%; Horse: 100%; Human: 100%; Mouse: 100%; Bovine: 100%; Rabbit: 100%; Zebrafish: 100%; Guinea pig: 100%

**Protein Pathways:** Ribosome

**Product images:**



WB Suggested Anti-RPS16 Antibody Titration: 1.25 ug/ml; Positive Control: Jurkat cell lysate

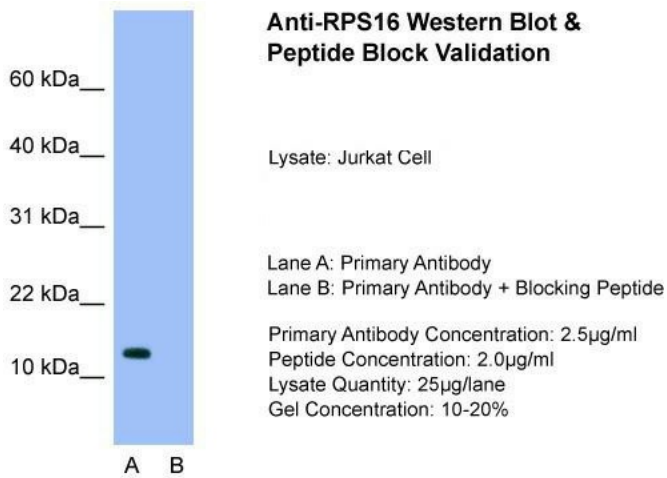


Primary Antibody: RPS16;  
Lysate: Jurkat Cell

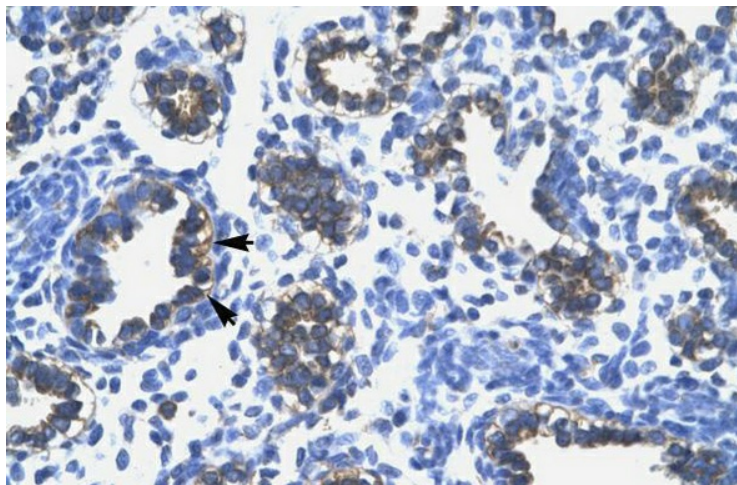
Lane A: Primary Antibody  
Lane B: Primary Antibody + Blocking Peptide

Primary Antibody Concentration: 2.5µg/ml  
Peptide Concentration: 2.0µg/ml  
Lysate Quantity: 25µg/lane  
Gel Concentration: 10-20%

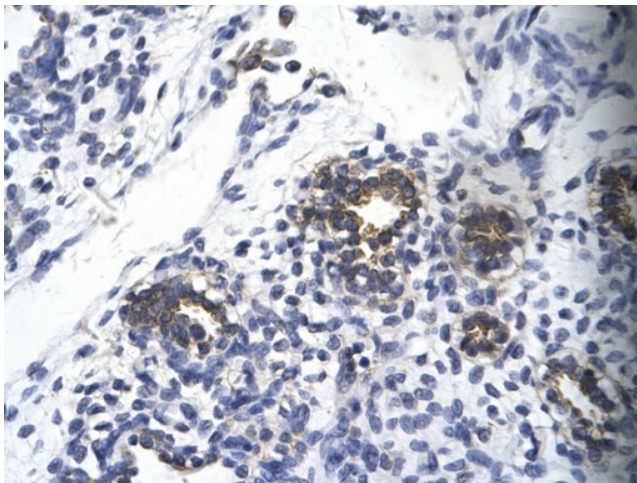
Host: Rabbit; Target Name: RPS16; Sample Tissue: Jurkat cell lysates; Lane A: Primary Antibody; Lane B: Primary Antibody + Blocking Peptide ; Primary Antibody Concentration:2.5 ug/ml; Peptide Concentration: 4.0ug/ml; Lysate Quantity: 25ug/lane; Gel Concen



Host: Rabbit; Target Name: RPS16; Sample Tissue: Jurkat; Lane A: Primary Antibody; Lane B: Primary Antibody + Blocking Peptide ; Primary Antibody Concentration:2.5ug/mL; Peptide Concentration: 2.0ug/mL; Lysate Quantity: 25ug/lane; Gel Concentration: 10-20%



Human Lung



Rabbit Anti-RPS16 Antibody; Paraffin Embedded Tissue: Human alveolar cell; Cellular Data: Epithelial cells of renal tubule; Antibody Concentration: 4.0-8.0 ug/ml; Magnification: 400X