

## Product datasheet for **TA334136**

### SLC10A7 Rabbit Polyclonal Antibody

#### Product data:

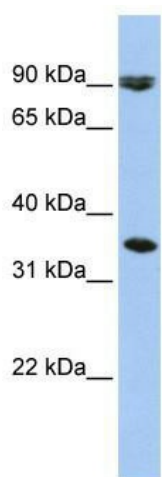
Product Type:	Primary Antibodies
Applications:	WB
Recommended Dilution:	WB
Reactivity:	Human
Host:	Rabbit
Isotype:	IgG
Clonality:	Polyclonal
Immunogen:	The immunogen for Anti-SLC10A7 Antibody: synthetic peptide directed towards the middle region of human SLC10A7. Synthetic peptide located within the following region: TTFCDTFSNPNIIDLKFSVLVLIIFIISIQLSFMLLTFIFSTRNNSGFTP
Formulation:	Liquid. Purified antibody supplied in 1x PBS buffer with 0.09% (w/v) sodium azide and 2% sucrose. <i>Note that this product is shipped as lyophilized powder to China customers.</i>
Purification:	Affinity Purified
Conjugation:	Unconjugated
Storage:	Store at -20°C as received.
Stability:	Stable for 12 months from date of receipt.
Predicted Protein Size:	37 kDa
Gene Name:	solute carrier family 10 member 7
Database Link:	<a href="#">NP_001025169</a> <a href="#">Entrez Gene 84068 Human</a> <a href="#">Q0GE19</a>
Background:	SLC10A7 belongs to the sodium: bile acid symporter family. It is a multi-pass membrane protein. The function of SLC10A7 remains unknown.
Synonyms:	C4orf13; P7
Note:	Immunogen sequence homology: Dog: 100%; Rat: 100%; Horse: 100%; Human: 100%; Mouse: 100%; Rabbit: 100%; Pig: 93%; Bovine: 93%; Guinea pig: 79%



[View online »](#)

Protein Families: Transmembrane

**Product images:**



WB Suggested Anti-SLC10A7 Antibody Titration:  
0.2-1 ug/ml; ELISA Titer: 1:1562500; Positive  
Control: HepG2 cell lysate